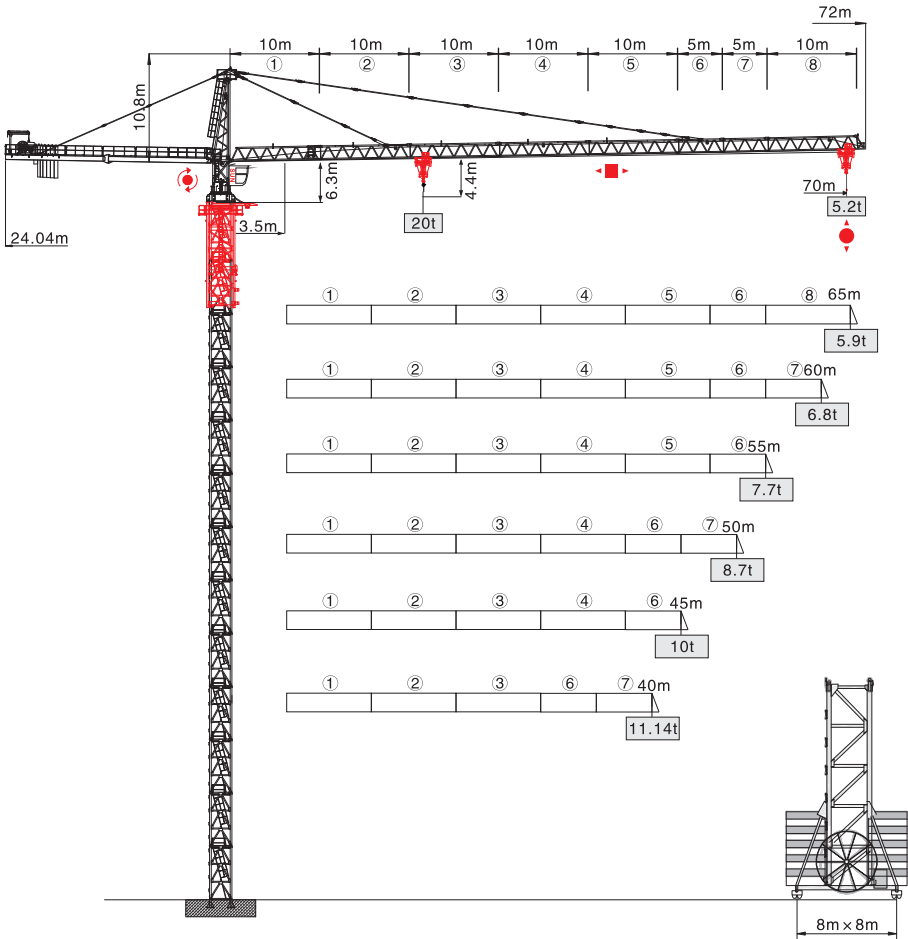


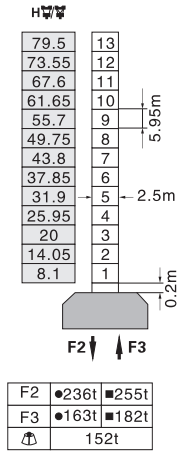


QTZ7052-20t

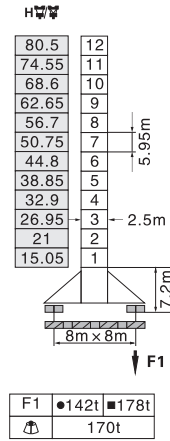


塔身截面 Mast 2.5m x 2.5m

固定式 Stationary

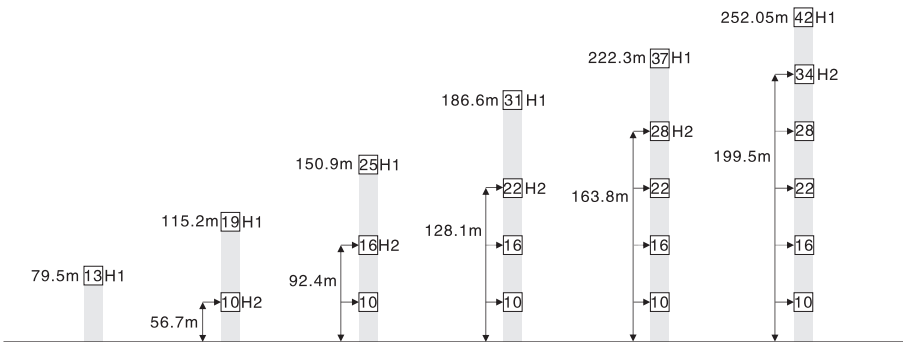


行走式 Traveling



- 工作状态 In service F=固定反力或轮压 Reactions
- 非工作状态 Out of service ⚖ 自重 Total weight without load and counter weight

附着 Anchorage






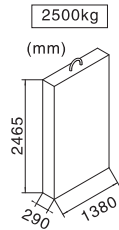
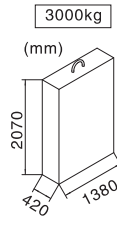
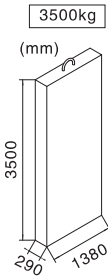
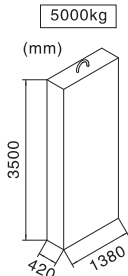
H1—塔机吊钩距地面的高度 Height under hook
H2—塔机附着位置距地面的高度 Height of anchorage frame to the ground
① > 252.05m 请向我司咨询 Consult us

载荷特性表 Load Diagrams








起重臂 Jib (m)	倍率 Fall	起重幅度 Range (m)	3.5-21.83	23	25	30	35	40	45	50	55	60	65	70
70	IV	起重重量 Load (t)	20	18.85	17.12	13.87	11.56	9.85	8.53	7.47	6.62	5.9	5.3	4.79
	II		10							8.94	7.88	7.03	6.31	5.71
起重臂 Jib (m)	倍率 Fall	起重幅度 Range (m)	3.5-22.39	23	25	30	35	40	45	50	55	60	65	
			起重重量 Load (t)	20	19.39	17.62	14.27	11.91	10.15	8.8	7.72	6.84	6.11	5.49
65	IV	起重重量 Load (t)	10							9.21	8.13	7.25	6.52	5.9
	II		10							9.21	8.13	7.25	6.52	5.9
起重臂 Jib (m)	倍率 Fall	起重幅度 Range (m)	3.5-23.16	25	28	30	35	40	45	50	55	60		
			起重重量 Load (t)	20	18.32	16.08	14.85	12.4	10.58	9.18	8.06	7.15	5.39	
60	IV	起重重量 Load (t)	10							9.59	8.47	7.56	6.8	
	II		10							9.59	8.47	7.56	6.8	
起重臂 Jib (m)	倍率 Fall	起重幅度 Range (m)	3.5-23.51	25	28	30	35	40	45	50	55			
			起重重量 Load (t)	20	18.65	16.39	15.12	12.63	10.78	9.35	8.22	7.29		
55	IV	起重重量 Load (t)	10							9.76	8.63	7.7		
	II		10							9.76	8.63	7.7		
起重臂 Jib (m)	倍率 Fall	起重幅度 Range (m)	3.5-23.68	25	28	30	35	40	45	50				
			起重重量 Load (t)	20	18.8	16.5	15.24	12.74	10.87	7.44	8.29			
50	IV	起重重量 Load (t)	10							9.85	8.7			
	II		10							9.85	8.7			
起重臂 Jib (m)	倍率 Fall	起重幅度 Range (m)	3.5-23.99	25	28	30	35	40	45					
			起重重量 Load (t)	20	19.08	16.76	14.58	12.94	11.05	9.59				
45	IV	起重重量 Load (t)	10											
	II		10											
起重臂 Jib (m)	倍率 Fall	起重幅度 Range (m)	3.5-24.15	25	28	30	35	40						
			起重重量 Load (t)	20	19.23	16.89	15.6	13.04	11.14					
40	IV	起重重量 Load (t)	10											
	II		10											

配重配置表 Counter Weight

		5000kg	3500kg	3000kg	2500kg	 kg
70m	24.04m	4	2	-	1	29500
65m	24.04m	4	2	-	-	27000
60m	24.04m	4	1	-	1	26000
55m	24.04m	4	1	-	-	23500
50m	24.04m	4	-	-	-	20000
45m	24.04m	3	-	1	-	18000
40m	24.04m	3	-	-	-	15000



机构特性 Mechanisms

机构名称 Name	机构型号 Model						功率 Power
起升 Hoisting 	120LVF50	m/min	t	m/min	t	700m 变频控制 Inverter Control	90Kw
		0-45	10	0-22.5	20		
		0-90	5	0-45	10		
变幅 Trolleying 	DVF185	m/min	0-65		变频控制 Inverter Control		9Kw
回转 Slewing 	RCV185	r/min	0-0.7				3 × 9Kw
	RVF185	r/min	0-0.7		变频控制 Inverter Control		3 × 9Kw
行走 Traveling 	42TVF	m/min	0-25		变频控制 Inverter Control		6 × 5.2Kw
电网/Power Supply				380V/50Hz 440V/60Hz (± 5%)			
供电容量/Necessary Power				160KVA/200KVA (traveling)			

※ 本技术参数不受法律约束，技术信息请详见相应技术说明书。

Specifications and data is not legally binding.

For any technical information, please refer to the corresponding instructions.