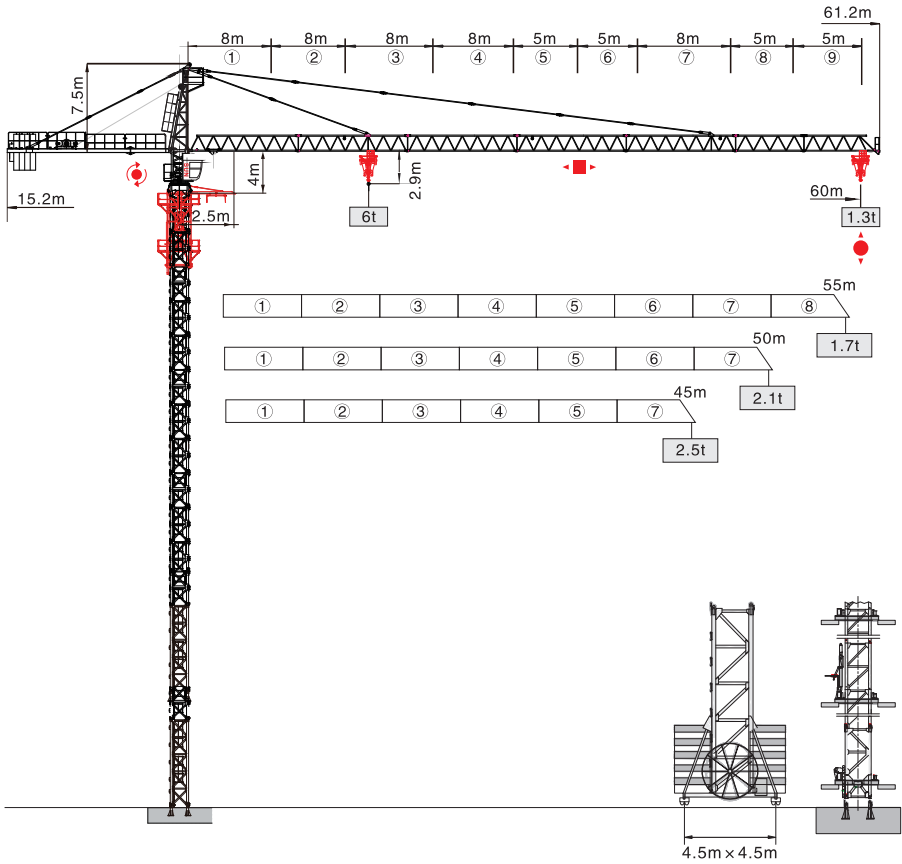
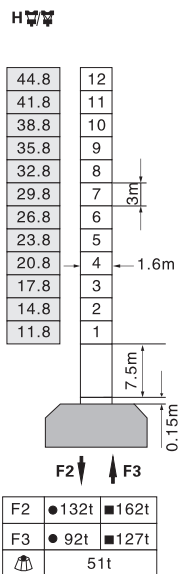


# QTZ6013-6t

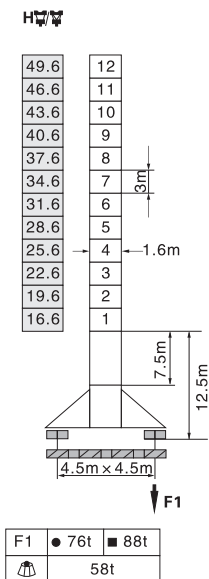


## 塔身截面 Mast 1.6m x 1.6m

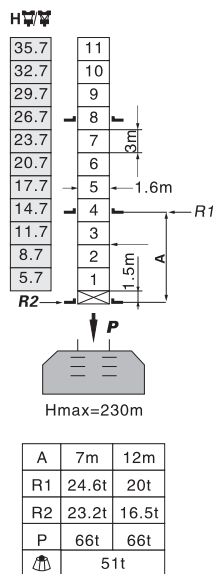
固定式 Stationary



行走式 Traveling

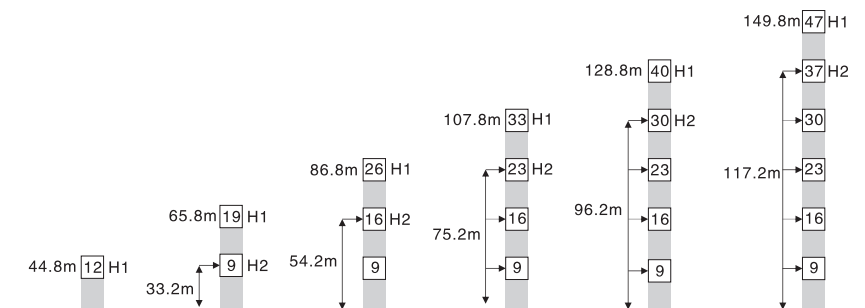


内爬式 Inner climbing



- 工作状态 In service
- 非工作状态 Out of service
- F=固定反力或轮压 Reactions
- 🏗️ 自重 Total weight without load and counter weight

## 附着 Anchorage



H1—塔机吊钩距地面的高度 Height under hook




H2—塔机附着位置距地面的高度 Height of anchorage frame to the ground

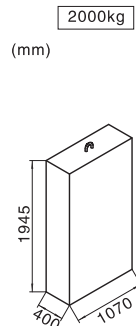
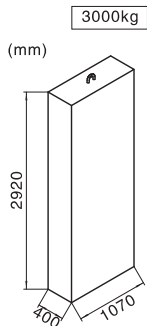
① > 149.8m 请向我司咨询 Consult us

## 载荷特性表 Load Diagrams








起重臂 Jib (m)	倍率 Fall	起重幅度 Range (m)	2.5~15.85	18	22	26	30	34	38	42	46	50	54	58	60
60	IV	起重重量 Load (t)	6	5.24	4.22	3.51	3	2.45	2.14	1.88	1.71	1.52	1.36	1.22	1.1
	II		3							2.65	2.34	2.08	1.91	1.72	1.56
起重臂 Jib (m)	倍率 Fall	起重幅度 Range (m)	2.5~17	18	22	26	30	34	38	42	46	50	55		
55	IV	起重重量 Load (t)	6	5.64	4.55	3.79	3.24	2.81	2.33	2.06	1.86	1.67	1.5		
	II		3							2.53	2.26	2.06	1.87	1.7	
起重臂 Jib (m)	倍率 Fall	起重幅度 Range (m)	2.5~18.4	24	28	32	36	40	44	50					
50	IV	起重重量 Load (t)	6	4.53	3.83	3.3	2.75	2.48	2.2	1.9					
	II		3							2.95	2.68	2.4	2.1		
起重臂 Jib (m)	倍率 Fall	起重幅度 Range (m)	2.5~19.3	24	30	36	40	45							
45	IV	起重重量 Load (t)	6	4.76	3.74	3.12	2.62	2.3							
	II		3							2.82	2.5				

## 配重配置表 Counter Weight

		3000kg	2000kg	 kg
60m	15.2m	4	2	16000
55m	15.2m	4	1	14000
50m	15.2m	3	2	13000
45m	15.2m	3	1	11000
40m	15.2m	3	-	9000



## 机构特性 Mechanisms

机构名称 Name	机构型号 Model						功率 Power
起升 Hoisting 	30LVF15	m/min	t	m/min	t	400m 变频控制 Inverter Control	22Kw
		0-40	3	0-20	6		
		0-80	1.5	0-40	3		
变幅 Trolleying 	X96L	m/min	0-60				4.5Kw
	DVF95	m/min	0-60		变频控制 Inverter Control		4.5Kw
回转 Slewing 	RCV95	r/min	0-0.7				2×4.5Kw
	RVF95	r/min	0-0.7		变频控制 Inverter Control		2×4.5Kw
行走 Traveling 	14TVF	m/min	0-25		变频控制 Inverter Control		2×5.2Kw
电网/Power Supply				380V/50Hz 440V/60Hz (±5%)			
供电容量/Necessary Power				44KVA/57KVA (traveling)			

※本技术参数不受法律约束，技术信息请详见相应技术说明书。

Specifications and data is not legally binding.

For any technical information, please refer to the corresponding instructions.