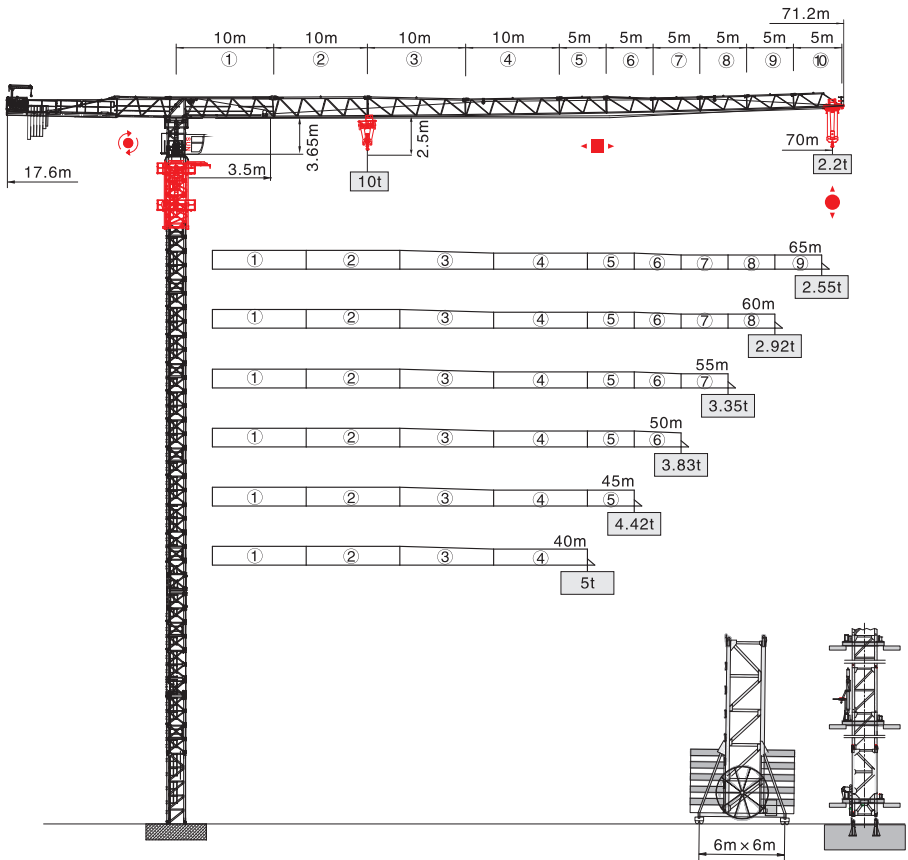
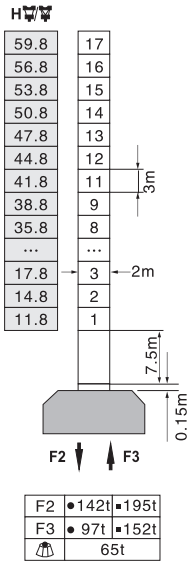


QTP7022-10t

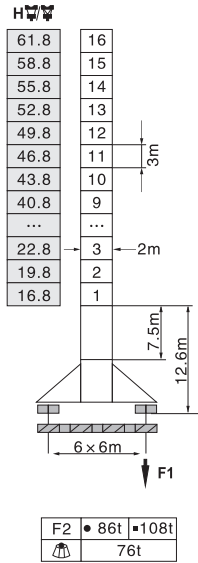


塔身截面 Mast 2m × 2m

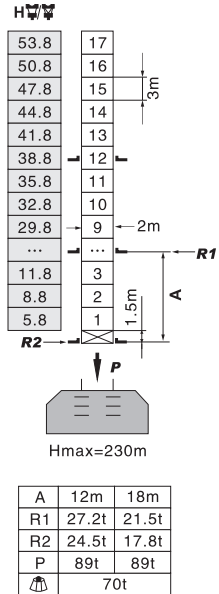
固定式 Stationary



行走式 Traveling

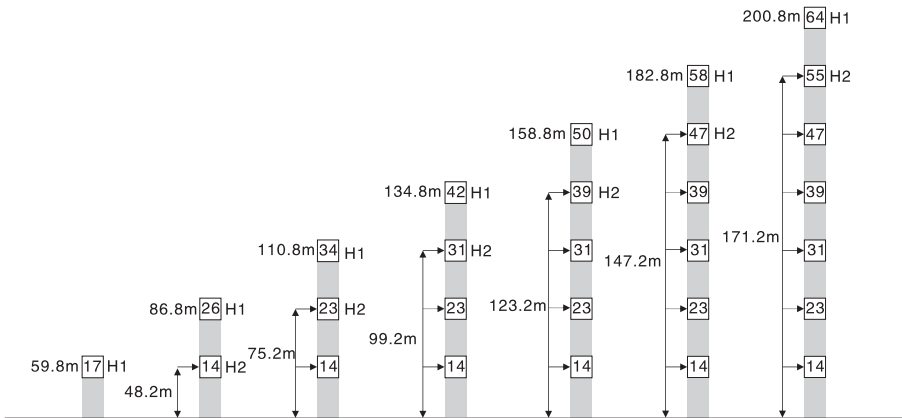


内爬式 Inner climbing



- 工作状态 In service
- 非工作状态 Out of service
- F=固定反力或轮压 Reactions
- 自重 Total weight without load and counter weight

附着 Anchorage






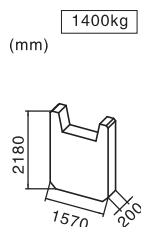
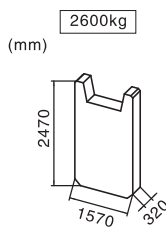
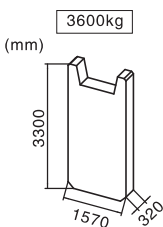
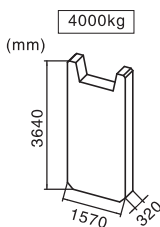
H1—塔机吊钩距地面的高度 Height under hook
 H2—塔机附着位置距地面的高度 Height of anchorage frame to the ground
 ① >200.8m 请向我司咨询 Consult us

载荷特性表 Load Diagrams








起重臂 Jib (m)	倍率 Fall	起重幅度 Range (m)	3.5-20.8	23	25	30	35	37.2	40	45	50	55	60	65	70
70	IV	起重重量 Load (t)	10	8.58	7.78	6.25	5.16	4.78	4.35	3.73	2.23	2.83	2.49	2.2	1.96
	II								4.59	3.97	3.47	3.07	2.73	2.44	2.2
起重臂 Jib (m)	倍率 Fall	起重幅度 Range (m)	3.5-20.9	23	25	30	35	38.5	40	45	50	55	60	65	70
65	II	起重重量 Load (t)	5	4.77	4.12	3.61	3.19	2.84	2.55						
起重臂 Jib (m)	倍率 Fall	起重幅度 Range (m)	3.5-21.2	23	25	30	35	39.2	40	45	50	55	60	65	70
60	II	起重重量 Load (t)	5	4.88	4.23	3.7	3.28	2.92							
起重臂 Jib (m)	倍率 Fall	起重幅度 Range (m)	3.5-21.55	23	25	30	35	39.9	40	45	50	55	60	65	70
55	II	起重重量 Load (t)	5	4.99	4.32	3.78	3.35								
起重臂 Jib (m)	倍率 Fall	起重幅度 Range (m)	3.5-21.75	23	25	30	35	40	45	50	55	60	65	70	75
50	II	起重重量 Load (t)	5	4.37	3.83										
起重臂 Jib (m)	倍率 Fall	起重幅度 Range (m)	3.5-21.95	23	25	30	35	40	45	50	55	60	65	70	75
45	II	起重重量 Load (t)	5	4.42											
起重臂 Jib (m)	倍率 Fall	起重幅度 Range (m)	3.5-22.05	23	25	30	35	40	45	50	55	60	65	70	75
40	II	起重重量 Load (t)	5												

配重配置表 Counter Weight

		4000kg	3600kg	2600kg	1400kg	 kg
70m	17.6m	1	4	1	1	22400
65m	17.6m	1	4	1	-	21000
60m	17.6m	1	4	-	1	19800
55m	17.6m	1	4	-	-	18400
50m	17.6m	1	3	1	-	17400
45m	17.6m	-	4	-	1	15800
40m	17.6m	-	4	-	-	14400



机构特性 Mechanisms

机构名称 Name	机构型号 Model				功率 Power		
起升 Hoisting 	60LVF25	m/min	t	m/min	600m 变频控制 Inverter Control	45Kw	
		0-45	5	0-22.5			10
		0-90	2.5	0-45			5
变幅 Trolleying 	X120K	m/min	0-65		变频控制 Inverter Control	6Kw	
	DVF120	m/min	0-65			6Kw	
回转 Slewing 	RCV145	r/min	0-0.7		变频控制 Inverter Control	2×7.5Kw	
	RVF145	r/min	0-0.7			2×7.5Kw	
行走 Traveling 	18TVF	m/min	0-25		变频控制 Inverter Control	4×3.4Kw	
电网/Power Supply			380V/50Hz 440V/60Hz (±5%)				
供电容量/Necessary Power			82KVA/100KVA (traveling)				

※ 本技术参数不受法律约束，技术信息请详见相应技术说明书。

Specifications and data is not legally binding.

For any technical information, please refer to the corresponding instructions.