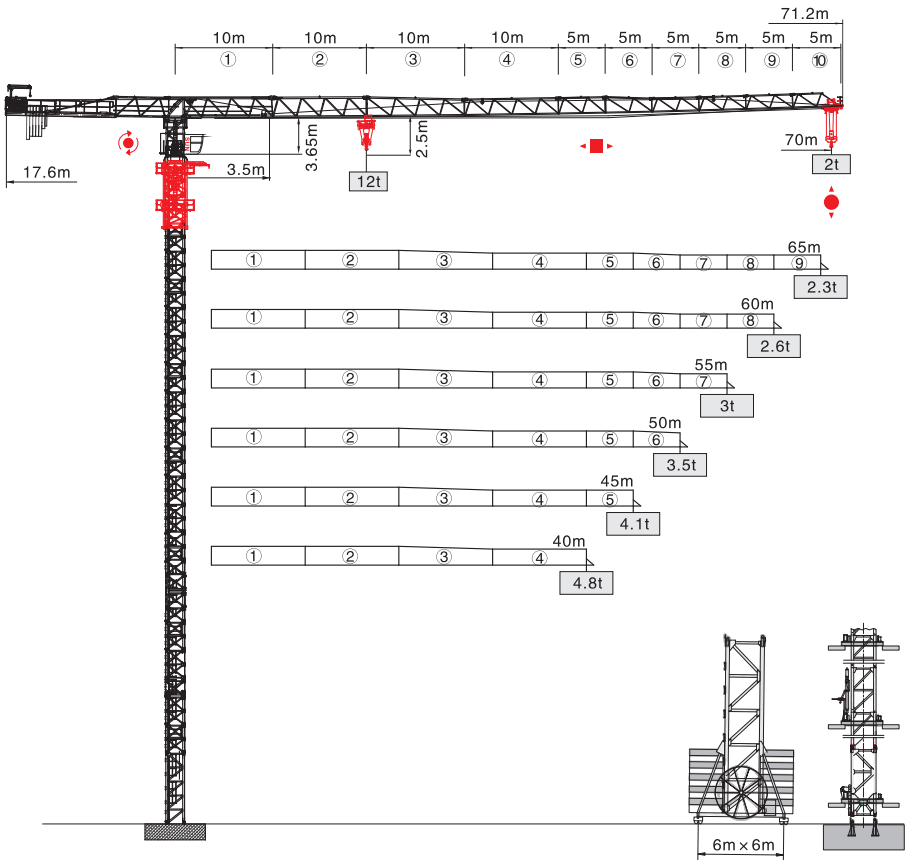


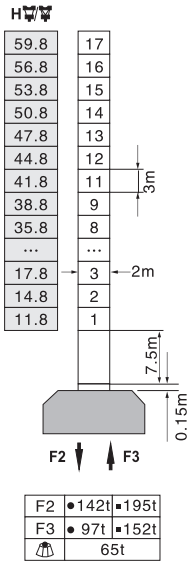


QTP7020-12t

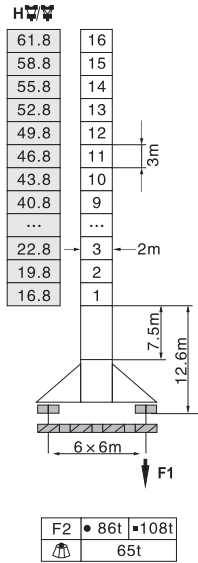


塔身截面 Mast 2m × 2m

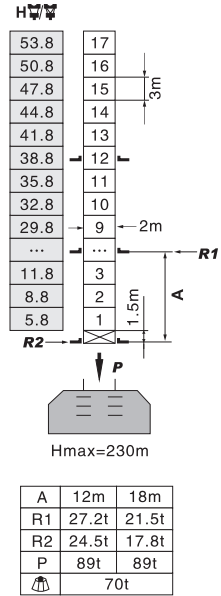
固定式 Stationary



行走式 Traveling

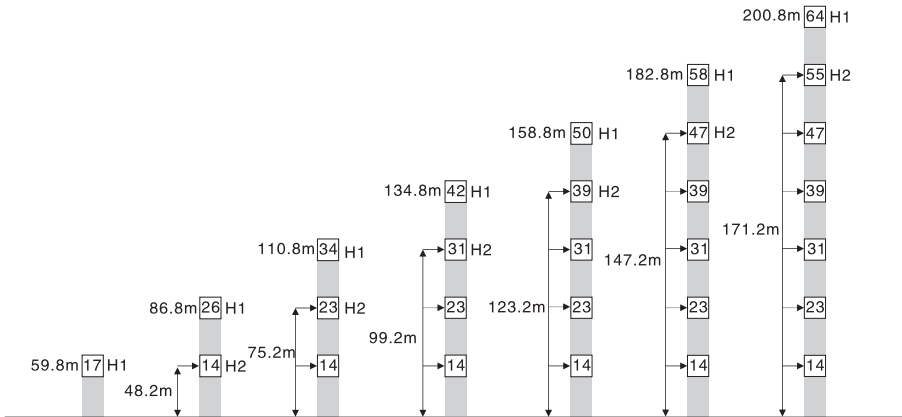


内爬式 Inner climbing



- 工作状态 In service
- 非工作状态 Out of service
- F=固定反力或轮压 Reactions
- ⚖ 自重 Total weight without load and counter weight

附着 Anchorage






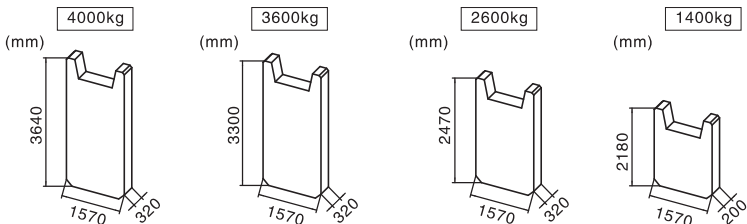
H1—塔机吊钩距地面的高度 Height under hook
 H2—塔机附着位置距地面的高度 Height of anchorage frame to the ground
 ① >200.8m 请向我司咨询 Consult us

载荷特性表 Load Diagrams










起重臂 Jib (m)	倍率 Fall	起重幅度 Range (m)	3.5-16.1	20	25	30	35	37.2	40	45	50	55	60	65	70
70	IV	起重重量 Load (t)	12	9.39	7.21	5.77	4.76	4.35	4	3.42	2.95	2.57	2.25	1.99	1.76
	II		6				5	4.59	4.24	3.66	3.19	2.81	2.49	2.23	2
起重臂 Jib (m)	倍率 Fall	起重幅度 Range (m)	3.5-16.5	20	25	30	35	38.5	40	45	50	55	60	65	
			65	IV	起重重量 Load (t)	12	9.63	7.4	5.93	4.89	4.42	4.12	3.52	3.04	2.66
	II	6				5.13	4.66	4.36	3.76	3.28	2.9	2.57	2.3		
起重臂 Jib (m)	倍率 Fall	起重幅度 Range (m)	3.5-16.6	20	25	30	35	39.2	40	45	50	55	60		
			60	IV	起重重量 Load (t)	12	9.71	7.46	5.99	4.94	4.42	4.16	3.56	3.08	2.69
	II	6				5.18	4.18	4.4	3.8	3.32	2.93	2.6			
起重臂 Jib (m)	倍率 Fall	起重幅度 Range (m)	3.5-16.9	20	25	30	35	37.5	40	45	50	55			
			55	IV	起重重量 Load (t)	12	9.92	7.63	6.12	5.06	4.66	4.26	3.65	3.16	2.76
	II	6				5.3	4.9	4.5	3.89	3.4	3				
起重臂 Jib (m)	倍率 Fall	起重幅度 Range (m)	3.5-17.3	20	25	30	35	40	45	50					
			50	IV	起重重量 Load (t)	12	10.18	7.83	6.29	5.2	4.39	3.76	3.26		
	II	6				5.44	4.63	4	3.5						
起重臂 Jib (m)	倍率 Fall	起重幅度 Range (m)	3.5-17.6	20	25	30	35	40	45						
			45	IV	起重重量 Load (t)	12	10.41	8.02	6.44	5.33	4.5	3.86			
	II	6				5.57	4.74	4.1							
起重臂 Jib (m)	倍率 Fall	起重幅度 Range (m)	3.5-17.8	20	25	30	35	40							
			40	IV	起重重量 Load (t)	12	10.53	8.11	6.52	5.4	4.56				
	II	6				5.64	4.8								

配重配置表 Counter Weight

		4000kg	3600kg	2600kg	1400kg	 kg
70m	17.6m	1	4	1	1	22400
65m	17.6m	1	4	1	-	21000
60m	17.6m	1	4	-	1	19800
55m	17.6m	1	4	-	-	18400
50m	17.6m	1	3	1	-	17400
45m	17.6m	-	4	-	1	15800
40m	17.6m	-	4	-	-	14400



机构特性 Mechanisms

机构名称 Name	机构型号 Model						功率 Power
起升 Hoisting 	75LVF30	m/min	t	m/min	t	600m 变频控制 Inverter Control	55Kw
		0-45	6	0-22.5	12		
		0-90	3	0-45	6		
变幅 Trolleying 	X120K	m/min	0-65				6Kw
	DVF120	m/min	0-65			变频控制 Inverter Control	6Kw
回转 Slewing 	RCV145	r/min	0-0.7				2×7.5Kw
	RVF145	r/min	0-0.7			变频控制 Inverter Control	2×7.5Kw
行走 Traveling 	18TVF	m/min	0-25			变频控制 Inverter Control	4×3.4Kw
电网/Power Supply				380V/50Hz 440V/60Hz (±5%)			
供电容量/Necessary Power				95KVA/112KVA (traveling)			

※ 本技术参数不受法律约束，技术信息请详见相应技术说明书。

Specifications and data is not legally binding.

For any technical information, please refer to the corresponding instructions.