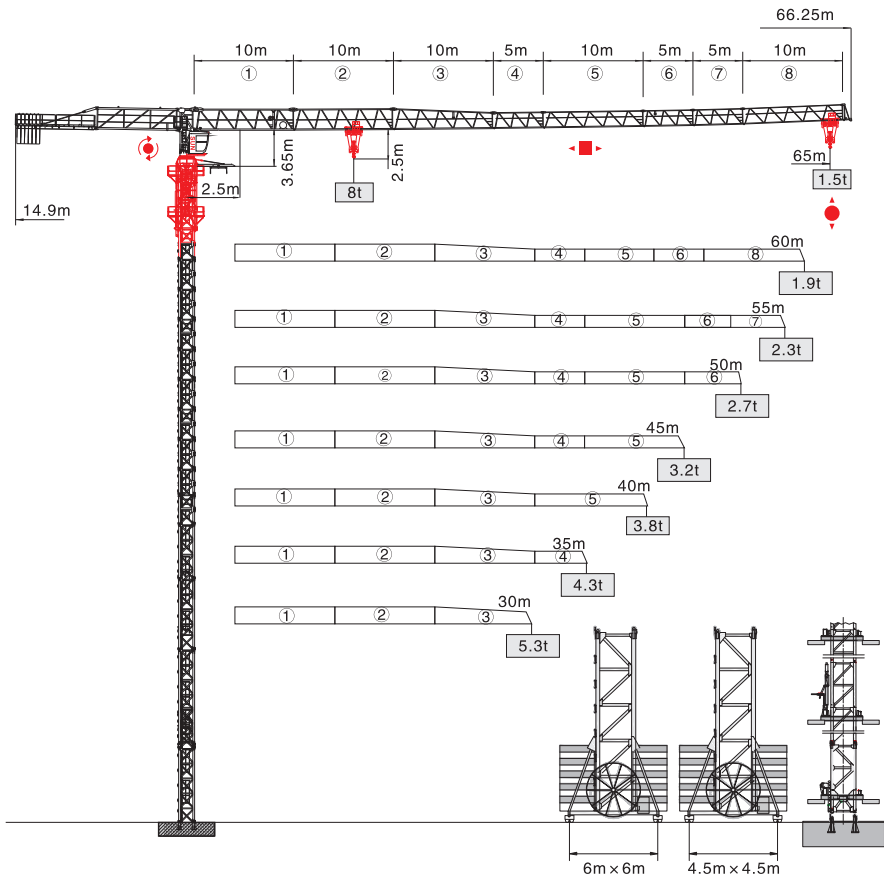


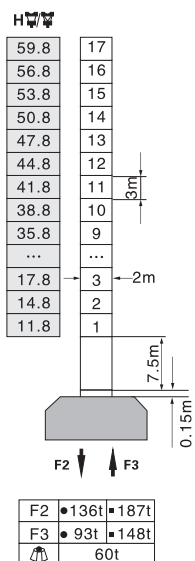


QTP6515-8t

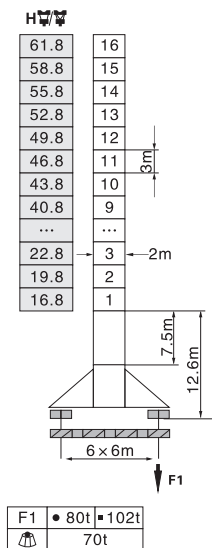


塔身截面 Mast 2m × 2m

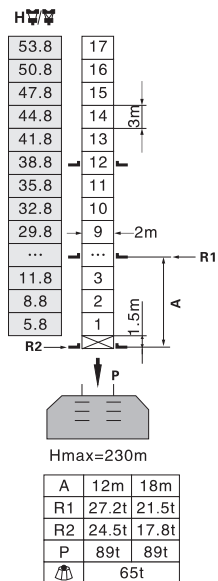
固定式 Stationary



行走式 Traveling

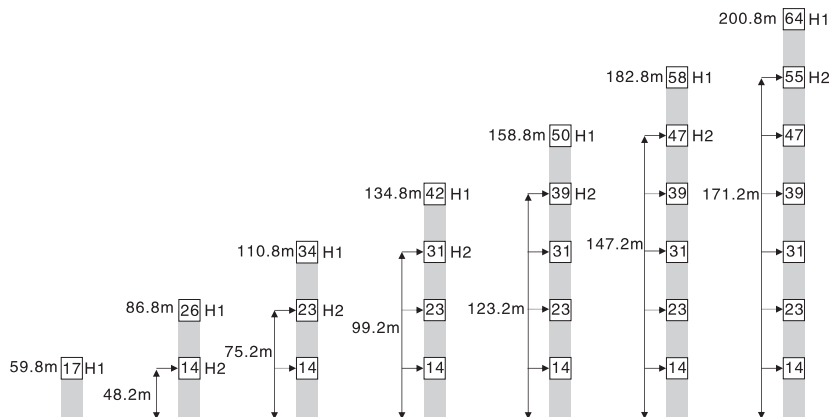


内爬式 Inner climbing



- 工作状态 In service
- 非工作状态 Out of service
- F=固定反力或轮压 Reactions
- ⚖ 自重 Total weight without load and counter weight

附着 Anchorage



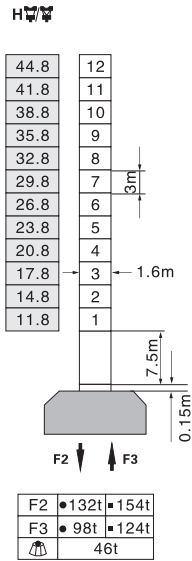
H1—塔机吊钩距地面的高度 Height under hook

H2—塔机附着位置距地面的高度 Height of anchorage frame to the ground

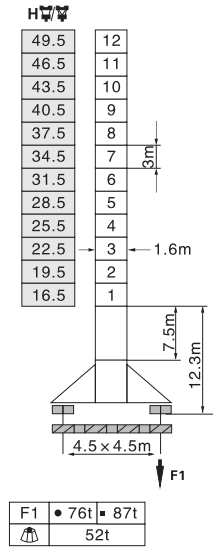
① > 200.8m 请向我司咨询 Consult us

塔身截面 Mast 1.6m × 1.6m

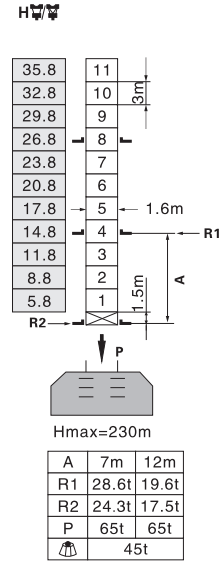
固定式 Stationary



行走式 Traveling

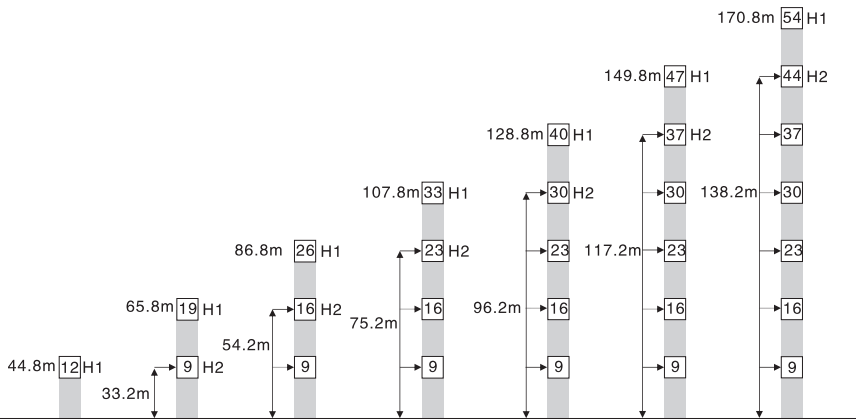


内爬式 Inner climbing



- 工作状态 In service
- 非工作状态 Out of service
- F=固定反力或轮压 Reactions
- 🏗️ 自重 Total weight without load and counter weight

附着 Anchorage



H1—塔机吊钩距地面的高度 Height under hook




H2—塔机附着位置距地面的高度 Height of anchorage frame to the ground

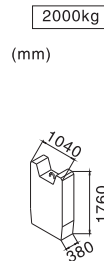
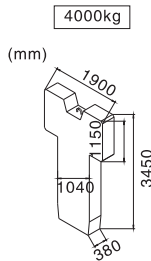
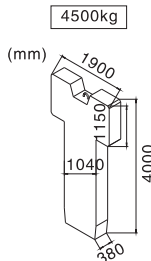
① > 170.8m 请向我司咨询 Consult us

载荷特性表 Load Diagrams


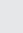

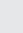





起重臂 Jib (m)	倍率 Fall	起重幅度 Range (m)	2.5-17.36	25	30	35	40	45	50	55	60	65
65	IV	起重重量	8	5.15	4.09	3.34	2.79	2.35	2.01	1.73	1.5	1.3
	II	Load (t)	4			3.54	2.99	2.55	2.21	1.93	1.7	1.5
60	IV	起重幅度 Range (m)	2.5-18.7	25	28.6	35	40	45	50	55	60	
	II	起重重量	8	5.56	4.5	3.7	3.09	2.63	2.25	1.95	1.7	
55	IV	起重重量	8	5.56	4.5	3.7	3.09	2.63	2.25	1.95	1.7	
	II	Load (t)	4			3.9	2.29	2.83	2.45	2.15	1.9	
50	IV	起重幅度 Range (m)	2.5-19.8	25	30	35	40	45	50	55		
	II	起重重量	8	5.98	4.78	3.8	3.3	2.81	2.42	2.1		
45	IV	起重重量	8	6.15	4.92	4.05	3.4	2.9	2.5			
	II	Load (t)	4				3.6	3.1	2.7			
40	IV	起重幅度 Range (m)	2.5-20.03	25	30	35	40	45	50			
	II	起重重量	8	6.33	5.07	4.18	3.51	3				
35	IV	起重重量	8	6.33	5.07	4.18	3.51	3				
	II	Load (t)	4				3.71	3.2				
30	IV	起重幅度 Range (m)	2.5-20.9	25	30	35	40					
	II	起重重量	8	6.47	5.19	4.28	3.6					
25	IV	起重重量	8	6.47	5.19	4.28	3.6					
	II	Load (t)	4				3.8					
20	IV	起重幅度 Range (m)	2.5-20.96	25	30	35						
	II	起重重量	8	6.5	5.21	4.3						
15	IV	起重重量	8	6.5	5.21	4.3						
	II	Load (t)	4									
10	IV	起重幅度 Range (m)	2.5-21.27	25	30							
	II	起重重量	8	6.61	5.3							
5	IV	起重重量	8	6.61	5.3							
	II	Load (t)	4									

配重配置表 Counter Weight

		4500kg	4000kg	2000kg	 kg
65m	14.9m	3	1	2	21500
60m	14.9m	3	1	1	19500
55m	14.9m	3	1	1	19500
50m	14.9m	2	1	2	17000
45m	14.9m	2	1	1	15000
40m	14.9m	2	1	-	13000
35m	14.9m	1	1	2	12500
30m	14.9m	1	1	1	10500



机构特性 Mechanisms

机构名称 Name	机构型号 Model						功率 Power
起升 Hoisting 	40LVF20	m/min	t	m/min	t	500m 变频控制 Inverter Control	30Kw
		0-40	4	0-20	8		
		0-80	2	0-40	4		
变幅 Trolleying 	X96L	m/min	0-65			变频控制 Inverter Control	4.5Kw
	DVF95	m/min	0-65				4.5Kw
回转 Slewing 	RCV95	r/min	0-0.7			变频控制 Inverter Control	2×4.5Kw
	RVF95	r/min	0-0.7				2×4.5Kw
行走 Traveling 	14TVF	m/min	0-25			变频控制 Inverter Control	2×5.2Kw
电网/Power Supply				380V/50Hz 440V/60Hz (±5%)			
供电容量/Necessary Power				54KVA/67KVA (traveling)			

※ 本技术参数不受法律约束，技术信息请详见相应技术说明书。

Specifications and data is not legally binding.

For any technical information, please refer to the corresponding instructions.