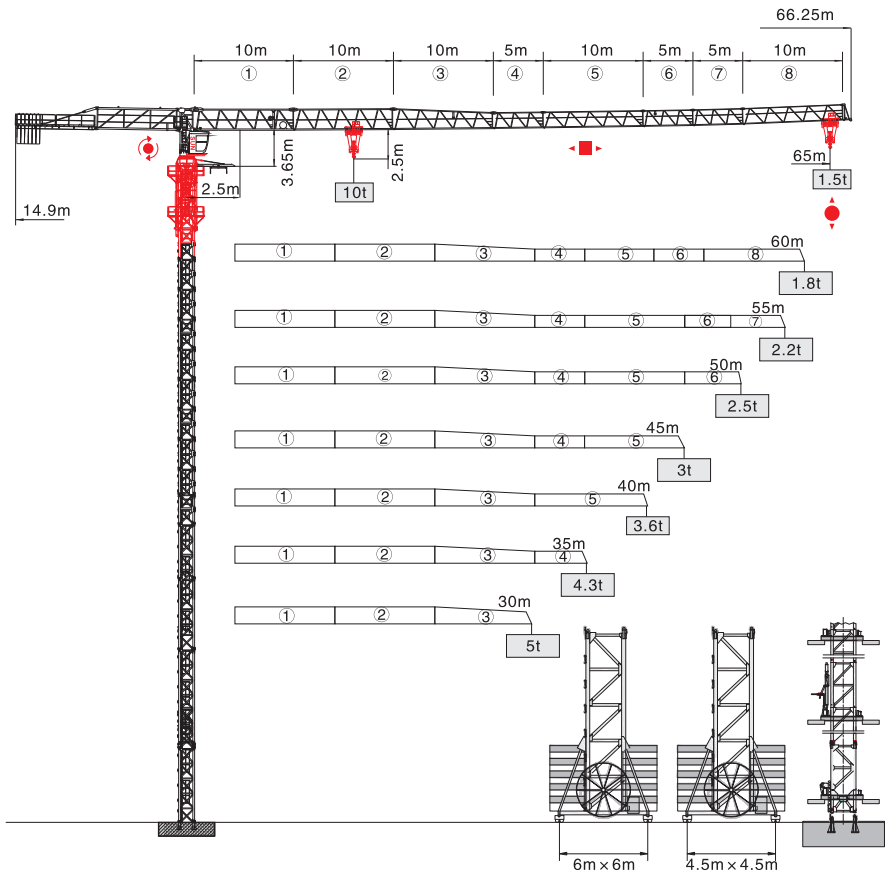


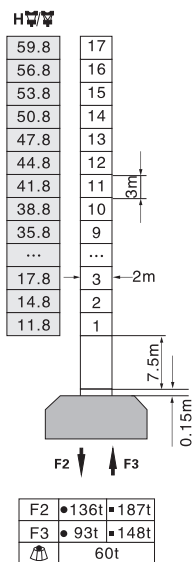


QTP6515-10t

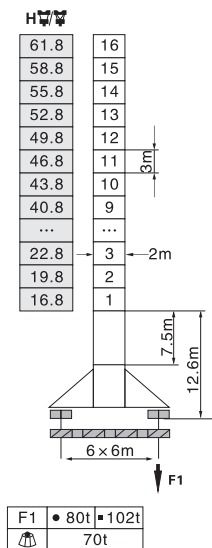


塔身截面 Mast 2m × 2m

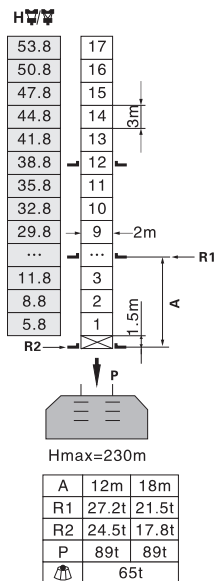
固定式 Stationary



行走式 Traveling

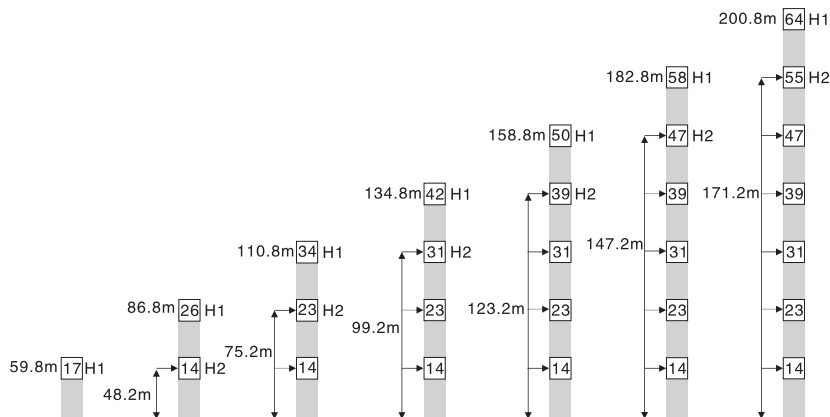


内爬式 Inner climbing



- 工作状态 In service
- 非工作状态 Out of service
- F=固定反力或轮压 Reactions
- 🏗️ 自重 Total weight without load and counter weight

附着 Anchorage



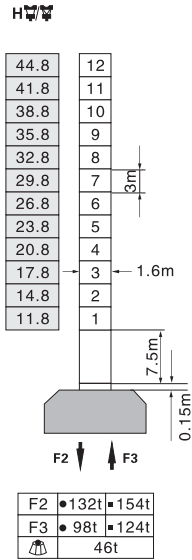
H1—塔机吊钩距地面的高度 Height under hook

H2—塔机附着位置距地面的高度 Height of anchorage frame to the ground

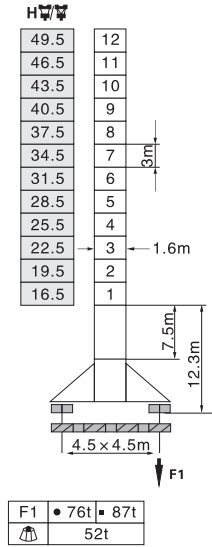
① >200.8m 请向我司咨询 Consult us

塔身截面 Mast 1.6m × 1.6m

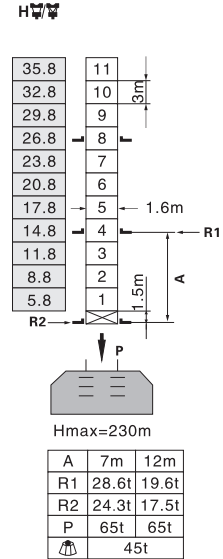
固定式 Stationary



行走式 Traveling

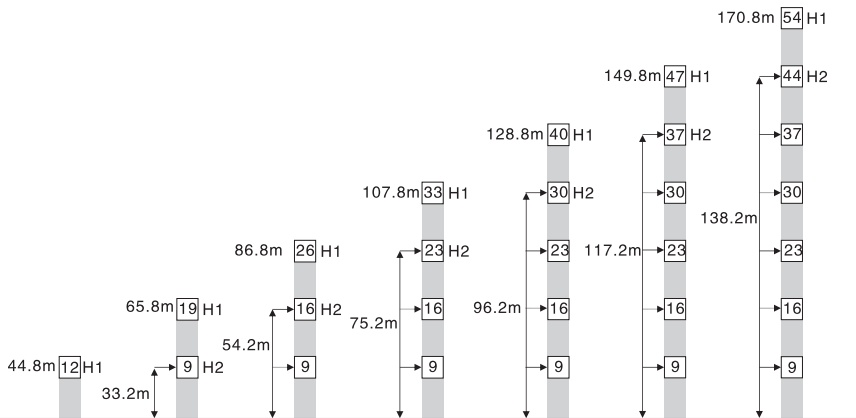


内爬式 Inner climbing



- 工作状态 In service
- 非工作状态 Out of service
- F=固定反力或轮压 Reactions
- 🏗️ 自重 Total weight without load and counter weight

附着 Anchorage



H1—塔机吊钩距地面的高度 Height under hook




H2—塔机附着位置距地面的高度 Height of anchorage frame to the ground

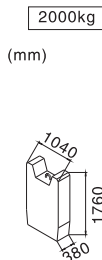
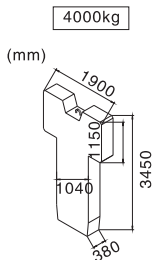
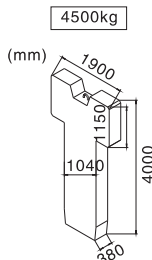
① > 170.8m 请向我司咨询 Consult us

载荷特性表 Load Diagrams








起重臂 Jib (m)	倍率 Fall	起重幅度 Range (m)	2.5-15.5	25	28.6	35	40	45	50	55	60	65
65	IV	起重重量	10	5.38	4.5	3.45	2.82	2.36	1.98	1.66	1.46	1.3
	II	Load (t)	5			3.65	3.02	2.56	2.18	1.86	1.66	1.5
60	IV	起重幅度 Range (m)	2.5-15.7	25	28.6	35	40	45	50	55	60	
	II	起重重量	10	5.69	4.8	3.67	3.04	2.56	2.18	1.86	1.6	
55	IV	起重重量	5			3.87	3.24	2.76	2.38	2.06	1.8	
	II	Load (t)	5			4.09	3.44	2.93	2.53	2.2		
50	IV	起重幅度 Range (m)	2.5-16.3	25	30	35	40	45	50	55		
	II	起重重量	10	6	4.81	3.89	3.24	2.73	2.33	2		
45	IV	起重重量	5			4.09	3.44	2.93	2.53	2.2		
	II	Load (t)	5			4.18	3.51	3				
40	IV	起重幅度 Range (m)	2.5-16.46	25	30	35	40	45	50			
	II	起重重量	10	6.05	4.8	3.85	3.2	2.7	2.3			
35	IV	起重重量	5			4.05	3.4	2.9	2.5			
	II	Load (t)	5			4.18	3.51	3				
30	IV	起重幅度 Range (m)	2.5-16.66	25	30	35	40	45				
	II	起重重量	10	6.13	4.8	3.98	3.31	2.8				
25	IV	起重重量	5			4.18	3.51	3				
	II	Load (t)	5			4.23	3.6					
20	IV	起重幅度 Range (m)	2.5-16.76	25	30	35	40					
	II	起重重量	10	6.24	4.88	4.03	3.4					
15	IV	起重重量	5			4.23	3.6					
	II	Load (t)	5			4.3						
10	IV	起重幅度 Range (m)	2.5-16.88	25	30	35						
	II	起重重量	10	6.35	4.96	4.1						
5	IV	起重重量	5			4.3						
	II	Load (t)	5			4.3						
0	IV	起重幅度 Range (m)	2.5-16.98	25	30							
	II	起重重量	10	6.46	5							
0	IV	起重重量	5									
	II	Load (t)	5									

配重配置表 Counter Weight

		4500kg	4000kg	2000kg	 kg
65m	14.9m	3	1	2	21500
60m	14.9m	3	1	1	19500
55m	14.9m	3	1	1	19500
50m	14.9m	2	1	2	17000
45m	14.9m	2	1	1	15000
40m	14.9m	2	1	-	13000
35m	14.9m	1	1	2	12500
30m	14.9m	1	1	1	10500



机构特性 Mechanisms

机构名称 Name	机构型号 Model						功率 Power
起升 Hoisting 	60LVF25	m/min	t	m/min	t	600m 变频控制 Inverter Control	45Kw
		0-45	5	0-22.5	10		
		0-90	2.5	0-45	5		
变幅 Trolleying 	X96L	m/min	0-65			变频控制 Inverter Control	4.5Kw
	DVF95	m/min	0-65				4.5Kw
回转 Slewing 	RCV95	r/min	0-0.7			变频控制 Inverter Control	2×4.5Kw
	RVF95	r/min	0-0.7				2×4.5Kw
行走 Traveling 	14TVF	m/min	0-25			变频控制 Inverter Control	2×5.2Kw
电网/Power Supply				380V/50Hz 440V/60Hz (±5%)			
供电容量/Necessary Power				73KVA/86KVA (traveling)			

※ 本技术参数不受法律约束，技术信息请详见相应技术说明书。

Specifications and data is not legally binding.

For any technical information, please refer to the corresponding instructions.