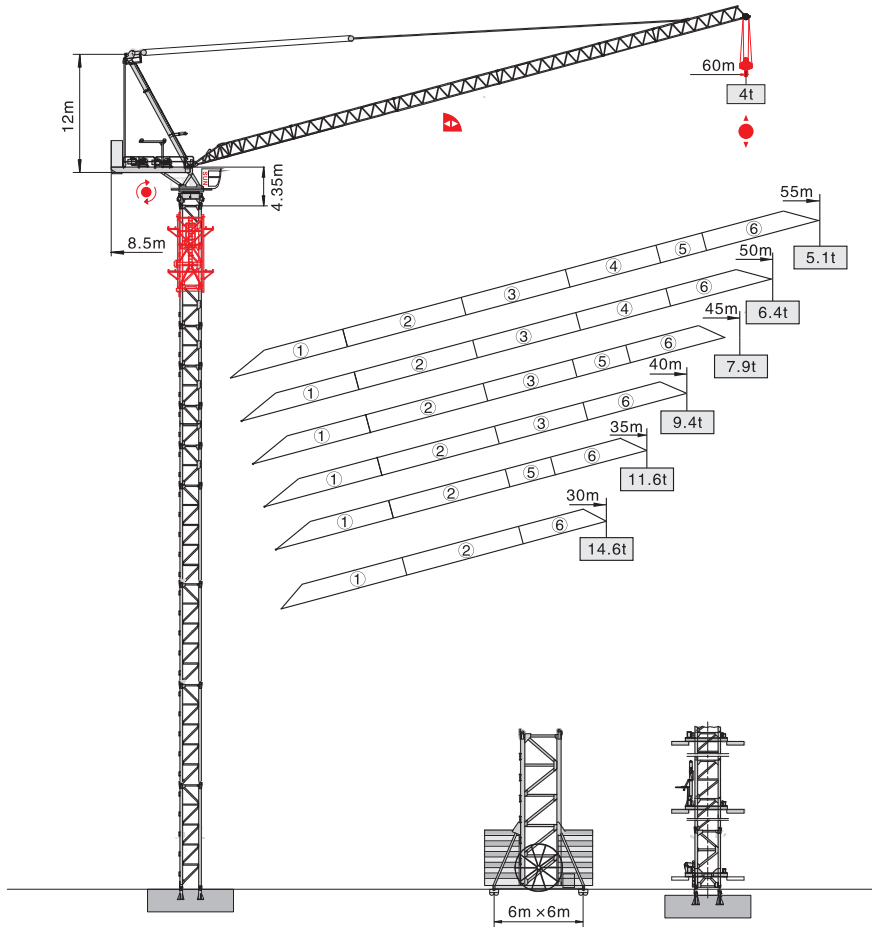


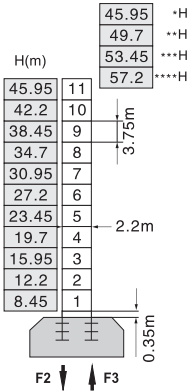


# QTD6040-16t



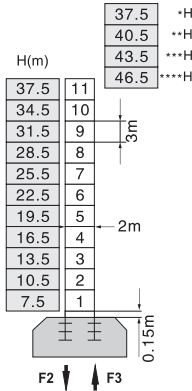
## 塔身截面 Mast 2.2m × 2.2m 2m × 2m

固定式 Stationary



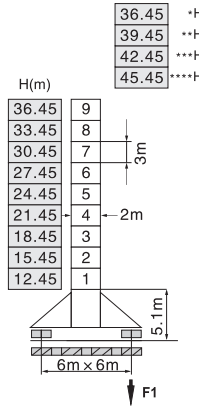
F2	● 180t	■ 315t
F3	● 131t	■ 272t
	⚖️	83t

固定式 Stationary



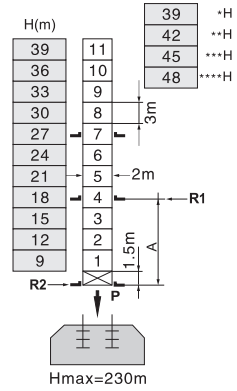
F2	● 172t	■ 308t
F3	● 123t	■ 265t
	⚖️	75t

行走式 Traveling



F1	● 120t	■ 152t
	⚖️	85t

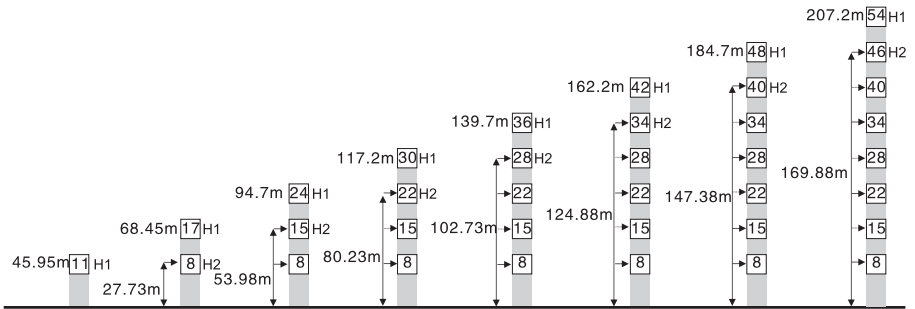
内爬式 Inner climbing



A	12m	18m
R1	30t	22.5t
R2	26t	19.5t
P	97t	97t
	⚖️	85t

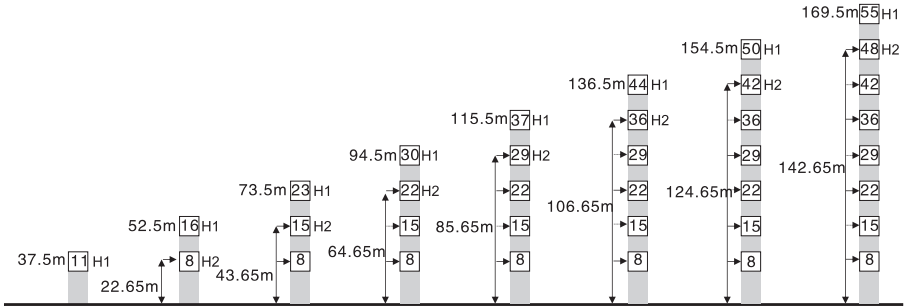
- H 臂根铰点下高度 Height under jib hinge shaft 臂架Jib \*60m \*\*55-50m \*\*\*45-40m \*\*\*\*35-30m
- 工作状态 In service F=固定反力或轮压 Reactions
- 非工作状态 Out of service ⚖️ 自重 Total weight without load and counter weight

## 附着 Anchorage 2.2m × 2.2m



- H1—臂根铰点下高度 Height under jib hinge shaft
- H2—塔机附着位置距地面的高度 Height of anchorage frame to the ground
- ① > 207.2m 请向我司咨询 Consult us

## 塔身截面 Mast 2m × 2m



H1—塔机吊钩距地面的高度 Height under hook




H2—塔机附着位置距地面的高度 Height of anchorage frame to the ground

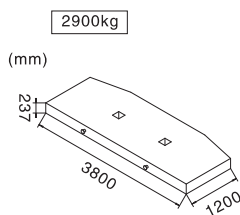
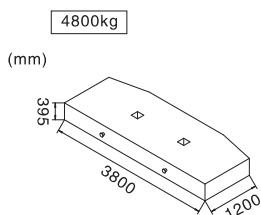
① > 169.5m 请向我司咨询 Consult us

## 载荷特性表 Load Diagrams








起重臂 Jib (m)	倍率 Fall	起重幅度 Range (m)	5.5~42.35		45	50	55	60
60	II	起重重量 Load (t)	8		7.36	6.01	4.92	4
起重臂 Jib (m)	倍率 Fall	起重幅度 Range (m)	5.1~43.35		45	50	55	
55	II	起重重量 Load (t)	8		7.5	6.18	5.1	
起重臂 Jib (m)	倍率 Fall	起重幅度 Range (m)	4.6~26.95	30	35	40	45	50
50	IV	起重重量 Load (t)	16	13.79	11.01	8.92	7.3	6
	II		8				7.7	6.4
起重臂 Jib (m)	倍率 Fall	起重幅度 Range (m)	4.2~27.11	30	35	40	45	
45	IV	起重重量 Load (t)	16	13.94	11.18	9.11	7.5	
	II		8				7.9	
起重臂 Jib (m)	倍率 Fall	起重幅度 Range (m)	3.7~27.43	30	35	40		
40	IV	起重重量 Load (t)	16	14.1	11.46	9.4		
	II		8					
起重臂 Jib (m)	倍率 Fall	起重幅度 Range (m)	3.3~25.08	30	35			
35	IV	起重重量 Load (t)	16	14.33	11.6			
	II		8					
起重臂 Jib (m)	倍率 Fall	起重幅度 Range (m)	2.8~25.39	30				
30	IV	起重重量 Load (t)	16	14.6				
	II		8					

## 配重配置表 Counter Weight

		4800kg	2900kg	 kg
60	8.5m	6	2	34600
55	8.5m	6	2	34600
50	8.5m	6	1	31700
45	8.5m	6	1	31700
40	8.5m	6	-	28800
35	8.5m	6	-	28800
30	8.5m	6	-	28800



## 机构特性 Mechanisms

机构名称 Name	机构型号 Model				功率 Power		
起升 Hoisting 	100LVF40	m/min	t	m/min	t	650m 变频控制 Inverter Control	75Kw
		0-45	8	0-22.5	16		
		0-90	4	0-45	8		
拉臂 Luffing 	75DVF50	min	≤3.0		变频控制 Inverter Control	55Kw	
回转 Slewing 	RCV185	r/min	0-0.7		变频控制 Inverter Control	2×9Kw	
	RVF185	r/min	0-0.7			2×9Kw	
行走 Traveling 	18TVF	m/min	0-25		变频控制 Inverter Control	4×3.4Kw	
电网/Power Supply			380V/50Hz 440V/60Hz (±5%)				
供电容量/Necessary Power			185KVA/202KVA (traveling)				

※ 本技术参数不受法律约束，技术信息请详见相应技术说明书。

Specifications and data is not legally binding.

For any technical information, please refer to the corresponding instructions.