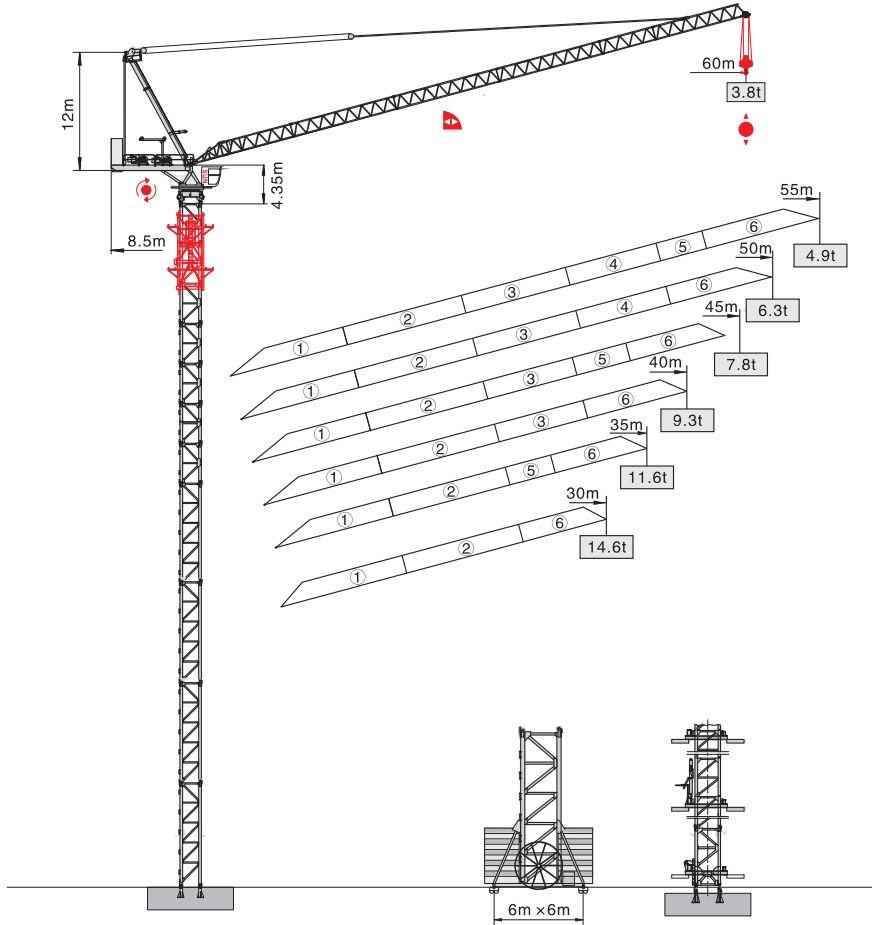
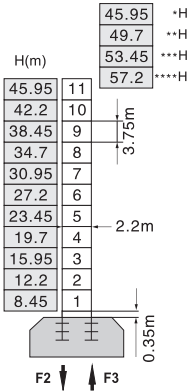


# QTD6038-18t



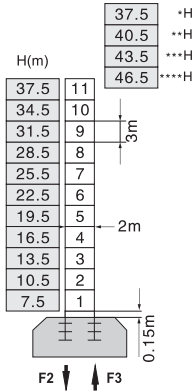
## 塔身截面 Mast 2.2m × 2.2m 2m × 2m

固定式 Stationary



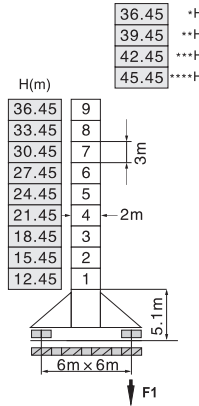
F2	● 180t	■ 315t
F3	● 131t	■ 272t
	83t	

固定式 Stationary



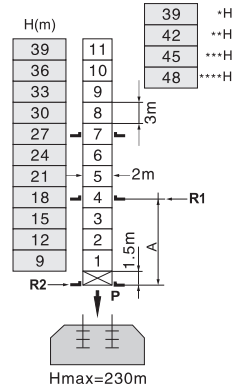
F2	● 172t	■ 308t
F3	● 123t	■ 265t
	75t	

行走式 Traveling



F1	● 120t	■ 152t
	85t	

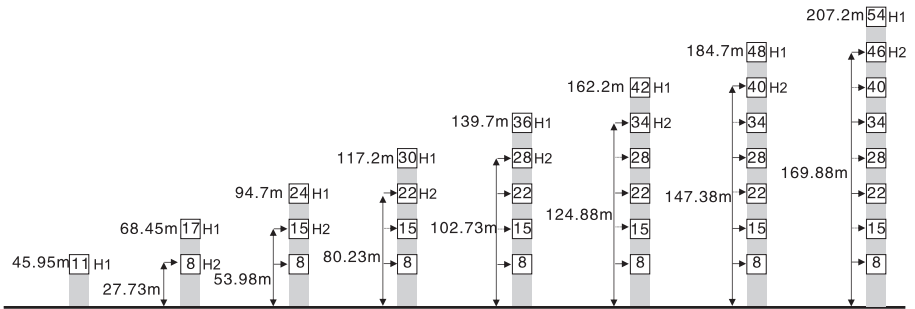
内爬式 Inner climbing



A	12m	18m
R1	30t	22.5t
R2	26t	19.5t
P	97t	97t
	85t	

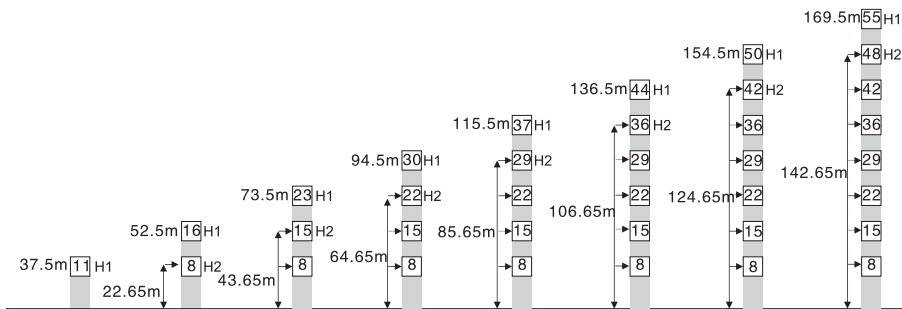
- H 臂根铰点下高度 Height under jib hinge shaft 臂架Jib \*60m \*\*55~50m \*\*\*45~40m \*\*\*\*35~30m
- 工作状态 In service F=固定反力或轮压 Reactions
- 非工作状态 Out of service 自重 Total weight without load and counter weight

## 附着 Anchorage 2.2m × 2.2m



- H1—臂根铰点下高度 Height under jib hinge shaft
- H2—塔机附着位置距地面的高度 Height of anchorage frame to the ground
- ① > 207.2m 请向我司咨询 Consult us

## 塔身截面 Mast 2m × 2m



H1—塔机吊钩距地面的高度 Height under hook




H2—塔机附着位置距地面的高度 Height of anchorage frame to the ground

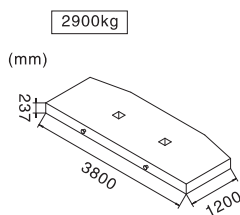
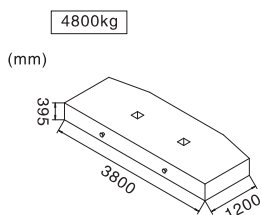
① > 169.5m 请向我司咨询 Consult us

## 载荷特性表 Load Diagrams








起重臂 Jib (m)	倍率 Fall	起重幅度 Range (m)	5.5~39.11	40	45	50	55	60	
60	II	起重重量 Load (t)	9	8.71	7.09	5.78	4.7	3.8	
起重臂 Jib (m)	倍率 Fall	起重幅度 Range (m)	5.5~39.56	40	45	50	55		
55	II	起重重量 Load (t)	9	8.86	7.25	5.96	4.9		
起重臂 Jib (m)	倍率 Fall	起重幅度 Range (m)	4.6~24.29	25	30	35	40	45	50
50	IV	起重重量 Load (t)	18	17.39	13.58	10.85	8.8	7.19	5.9
	II		9					7.59	6.3
起重臂 Jib (m)	倍率 Fall	起重幅度 Range (m)	4.2~24.54	25	30	35	40	45	
45	IV	起重重量 Load (t)	18	17.59	13.78	11.06	9	7.4	
	II		9					7.8	
起重臂 Jib (m)	倍率 Fall	起重幅度 Range (m)	3.7~24.86	25	30	35	40		
40	IV	起重重量 Load (t)	18	17.92	14.1	11.36	9.3		
	II		9						
起重臂 Jib (m)	倍率 Fall	起重幅度 Range (m)	3.3~25.08	30	35				
35	IV	起重重量 Load (t)	18	14.33	11.6				
	II		9						
起重臂 Jib (m)	倍率 Fall	起重幅度 Range (m)	2.8~25.39	30					
30	IV	起重重量 Load (t)	18	14.6					
	II		9						

## 配重配置表 Counter Weight

		4800kg	2900kg	 kg
60	8.5m	6	2	34600
55	8.5m	6	2	34600
50	8.5m	6	1	31700
45	8.5m	6	1	31700
40	8.5m	6	-	28800
35	8.5m	6	-	28800
30	8.5m	6	-	28800



## 机构特性 Mechanisms

机构名称 Name	机构型号 Model				功率 Power		
起升 Hoisting 	100LVF45	m/min	t	m/min	650m 变频控制 Inverter Control	75Kw	
		0-40	9	0-20			18
		0-80	4.5	0-40			9
拉臂 Luffing 	75DVF50	min	≤3.0		变频控制 Inverter Control	55Kw	
回转 Slewing 	RCV185	r/min	0-0.7		变频控制 Inverter Control	2×9Kw	
	RVF185	r/min	0-0.7			2×9Kw	
行走 Traveling 	18TVF	m/min	0-25		变频控制 Inverter Control	4×3.4Kw	
电网/Power Supply			380V/50Hz 440V/60Hz (±5%)				
供电容量/Necessary Power			185KVA/202KVA (traveling)				

※ 本技术参数不受法律约束，技术信息请详见相应技术说明书。

Specifications and data is not legally binding.

For any technical information, please refer to the corresponding instructions.