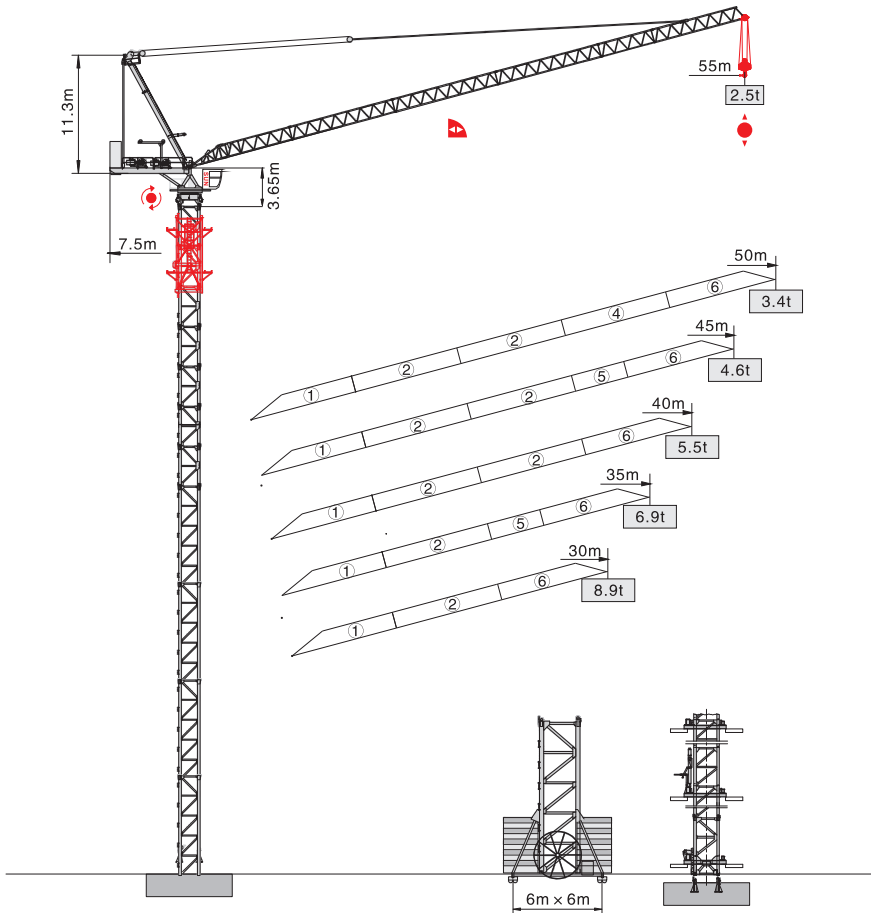


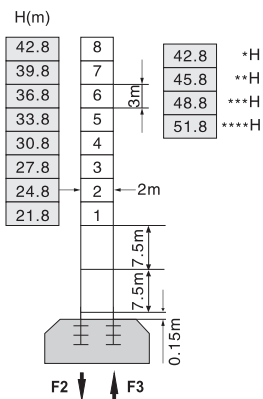


QTD5525-10t



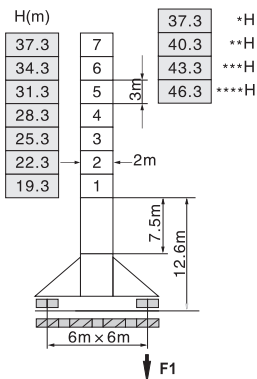
塔身截面 Mast 2m x 2m

固定式 Stationary



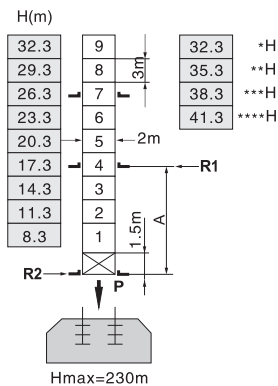
F2	●165t	■300t
F3	●115t	■257t
	75t	

行走式 Traveling



F1	●109t	■143t
	84t	

内爬式 Inner climbing



A	12m	16m
R1	31t	23t
R2	27t	20t
P	90t	90t
	77t	

H 臂根铰点下高度 Height under jib hinge shaft 臂架 Jib *55m **50m ***45-40m ****35-30m

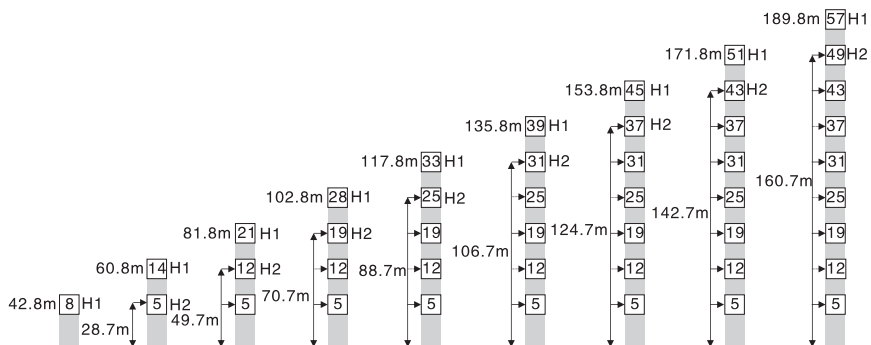
● 工作状态 In service

F=固定反力或轮压 Reactions

■ 非工作状态 Out of service

自重 Total weight without load and counter weight

附着 Anchorage 2m x 2m



H1—臂根铰点下高度 Height under jib hinge shaft

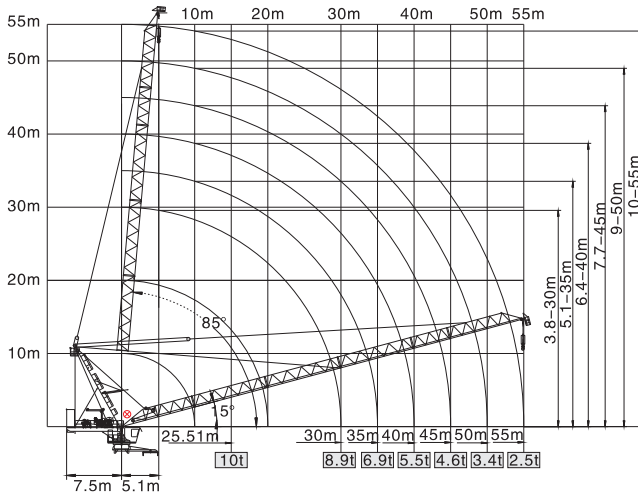
H2—塔机附着位置距地面的高度 Height of anchorage frame to the ground

① > 189.8m 请向我司咨询 Consult us

载荷特性表 Load Diagrams




起重臂 Jib (m)	倍率 Fall	起重幅度 Range (m)	5.1~25.51	30	35	40	45	50	55
55	IV	起重量	10	7.85	6.11	4.8	3.78	2.97	2.3
	II	Load (t)	5					3.98	3.17
起重臂 Jib (m)	倍率 Fall	起重幅度 Range (m)	4.6~25.9	30	35	40	45	50	
50	IV	起重量	10	8.07	6.33	5.03	4.01	3.2	
	II	Load (t)	5					4.21	3.4
起重臂 Jib (m)	倍率 Fall	起重幅度 Range (m)	4.2~26.88	30	35	40	45		
45	IV	起重量	10	8.55	6.77	5.44	4.4		
	II	Load (t)	5					4.6	
起重臂 Jib (m)	倍率 Fall	起重幅度 Range (m)	3.7~26.88	30	35	40			
40	IV	起重量	10	8.55	6.81	5.5			
	II	Load (t)	5						
起重臂 Jib (m)	倍率 Fall	起重幅度 Range (m)	3.3~26.92	30	35				
35	IV	起重量	10	8.62	6.9				
	II	Load (t)	5						
起重臂 Jib (m)	倍率 Fall	起重幅度 Range (m)	2.8~27.5	30					
30	IV	起重量	10	8.9					
	II	Load (t)	5						

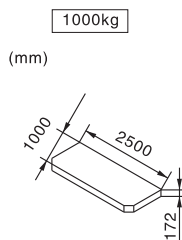
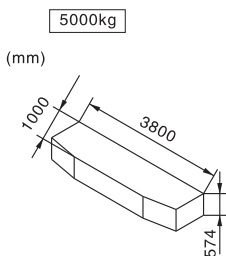
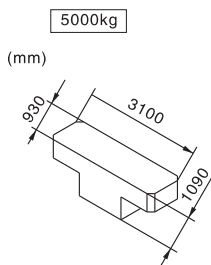
载荷特性 Load Diagrams










⊗ 臂根铰点 Jib hinge shaft

配重配置表 Counter Weight

		5000kg	5000kg	1000kg	 kg
55m	7.5m	1	3	3	23000
50m	7.5m	1	3	1	21000
45m	7.5m	1	3	1	21000
40m	7.5m	1	3	-	20000
35m	7.5m	1	3	-	20000
30m	7.5m	1	3	-	20000



机构特性 Mechanisms

机构名称 Name	机构型号 Model				功率 Power		
起升 Hoisting 	60LVF25	m/min	t	m/min	600m 变频控制 Inverter Control	45Kw	
		0-45	5	0-22.5			10
		0-90	2.5	0-45			5
拉臂 Luffing 	50DVF40	min	≤3.0		变频控制 Inverter Control	37Kw	
回转 Slewing 	RCV120	r/min	0-0.7		变频控制 Inverter Control	2×6Kw	
	RVF120	r/min	0-0.7			2×6Kw	
行走 Traveling 	18TVF	m/min	0-25		变频控制 Inverter Control	4×3.4Kw	
电网/Power Supply			380V/50Hz 440V/60Hz (±5%)				
供电容量/Necessary Power			118KVA/135KVA (traveling)				

※ 本技术参数不受法律约束，技术信息请详见相应技术说明书。

Specifications and data is not legally binding.

For any technical information, please refer to the corresponding instructions.