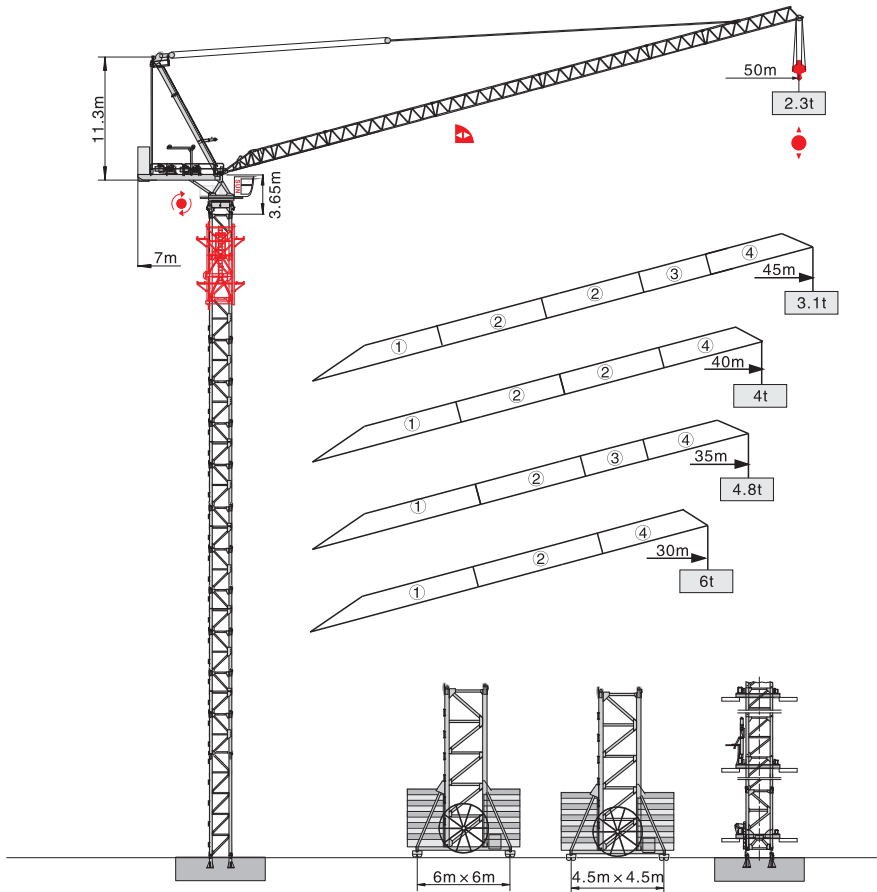


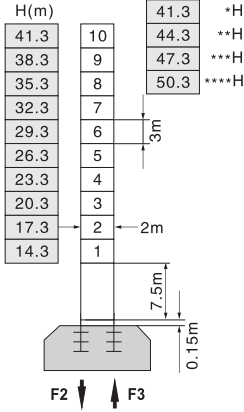


QTD5023-8t



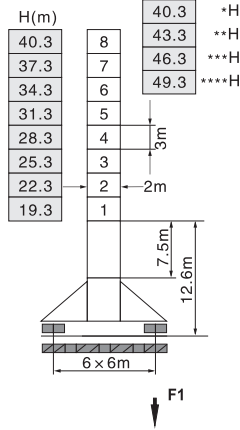
塔身截面 Mast 2m x 2m

固定式 Stationary



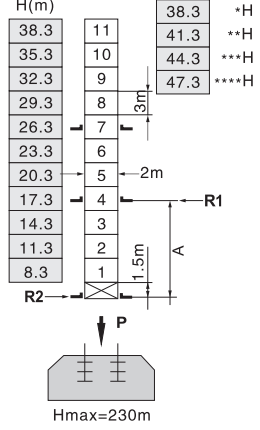
F2	● 146t	■ 175t
F3	● 98t	■ 152t
	🏗️	67t

行走式 Traveling



F1	● 92t	■ 108t
	🏗️	75t

内爬式 Inner climbing

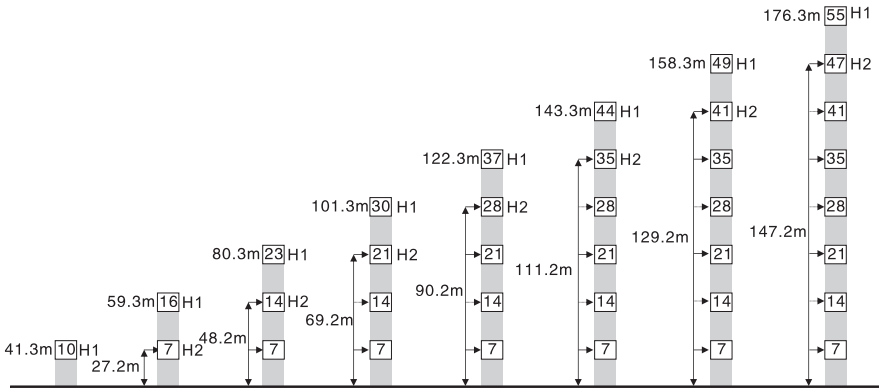


A	12m	18m
R1	25.6t	38.6t
R2	23.1t	34.2t
P	82.1t	82.1t
	🏗️	73t

H 臂根铰点下高度 Height under jib hinge shaft 臂架 Jib +50m **45m ***40m ****35-30m

- 工作状态 In service F=固定反力或轮压 Reactions
- 非工作状态 Out of service 🏗️ 自重 Total weight without load and counter weight

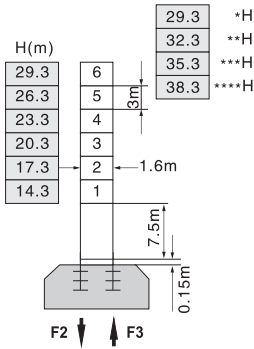
附着 Anchorage



H1—臂根铰点下高度 Height under Jib Hinge Shaft
 H2—塔机附着位置距地面的高度 Height of anchorage frame to the ground
 ① > 176.3m 请向我司咨询 Consult us

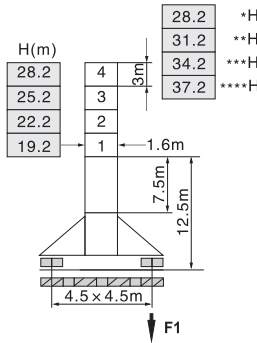
塔身截面 Mast 1.6m × 1.6m

固定式 Stationary



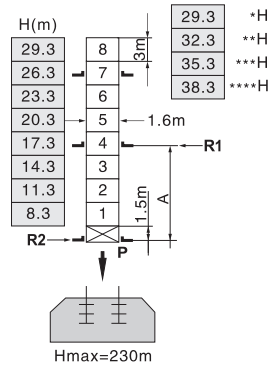
F2	● 118t	■ 135t
F3	● 78t	■ 105t
	57t	

行走式 Traveling



F1	● 76t	■ 88t
	61t	

内爬式 Inner climbing



A	7m	11m
R1	22.2t	14.2t
R2	19.7t	12.6t
P	71.5t	71.5t
	59t	

H 臂根铰点下高度 Height under jib hinge shaft 臂架 Jib *50m **45m ***40m ****35-30m

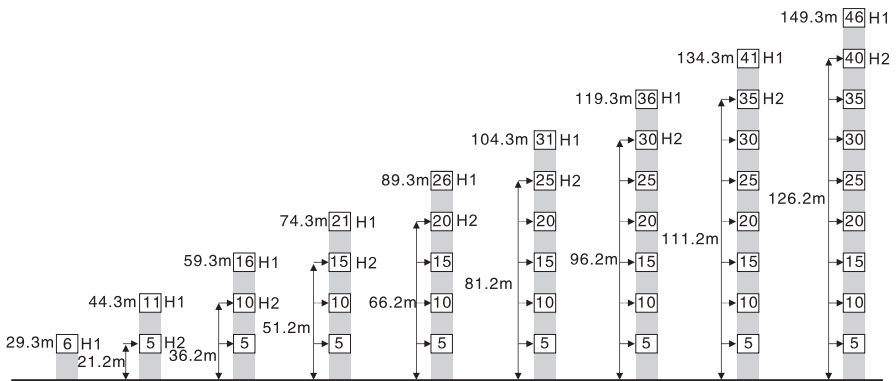
● 工作状态 In service

F=固定反力或轮压 Reactions

■ 非工作状态 Out of service

自重 Total weight without load and counter weight

附着 Anchorage



H1—臂根铰点下高度 Height under Jib Hinge Shaft

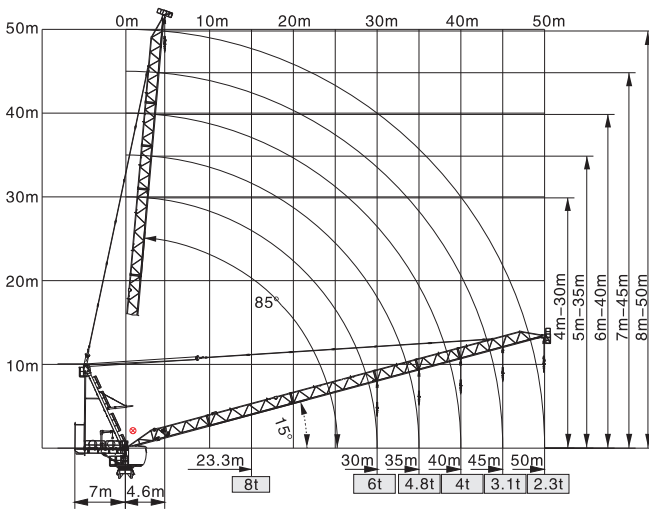
H2—塔机附着位置距地面的高度 Height of anchorage frame to the ground

① > 149.3m 请向我司咨询 Consult us

载荷特性表 Load Diagrams




起重臂 Jib (m)	倍率 Fall	起重幅度 Range (m)	25	30	35	40	45	50	
50	IV	起重重量 Load (t)	8	7.28	5.55	4.32	3.39	2.67	2.1
	II		4				3.59	2.87	2.3
45	IV	起重重量 Load (t)	8	7.52	5.78	4.55	3.63	2.9	
	II		4				3.83	3.1	
40	IV	起重重量 Load (t)	8	7.68	5.96	4.72	3.8		
	II		4						
35	IV	起重重量 Load (t)	8	7.71	6.01	4.8			
	II		4						
30	IV	起重重量 Load (t)	8	7.66	6				
	II		4						

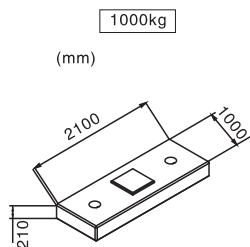
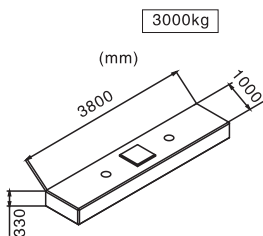
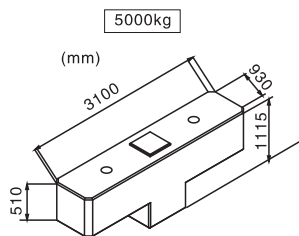
载荷特性 Load Diagrams










⊗ 臂根铰点 Jib hinge shaft

配重配置表 Counter Weight

		5000kg	3000kg	1000kg	 kg
50m	7m	1	5	2	22000
45m	7m	1	5	1	21000
40m	7m	1	5	-	20000
35m	7m	1	4	2	19000
30m	7m	1	4	1	18000



机构特性 Mechanisms

机构名称 Name	机构型号 Model						功率 Power
		m/min	t	m/min	t		
起升 Hoisting 	40LVF20	0-45	4	0-22.5	8	500m 变频控制 Inverter Control	30Kw
		0-90	2	0-45	4		
拉臂 Luffing 	40DVF35	min		≤3.0		变频控制 Inverter Control	30Kw
回转 Slewing 	RCV95	r/min		0-0.7			2 × 4.5Kw
	RVF95	r/min		0-0.7		变频控制 Inverter Control	2 × 4.5Kw
行走 Traveling 	14TVF	m/min		0-25		变频控制 Inverter Control	2 × 5.2Kw
电网/Power Supply				380V/50Hz 440V/60Hz (±5%)			
供电容量/Necessary Power				86KVA/99KVA (traveling)			

※本技术参数不受法律约束，技术信息请详见相应技术说明书。

Specifications and data is not legally binding.

For any technical information, please refer to the corresponding instructions.