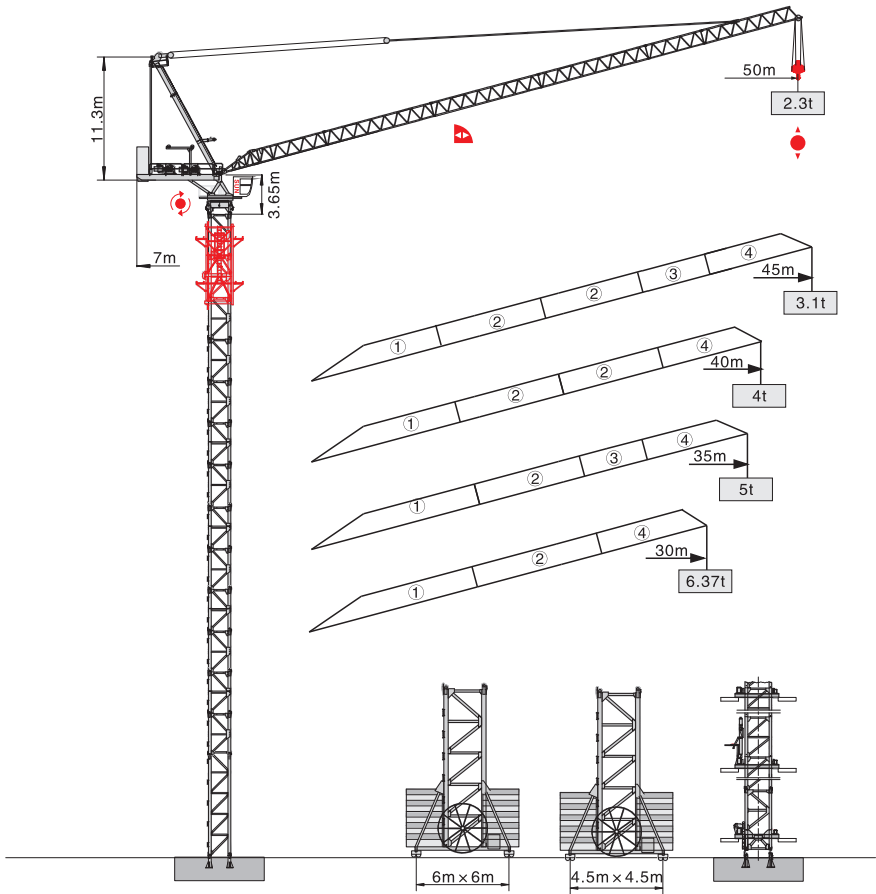


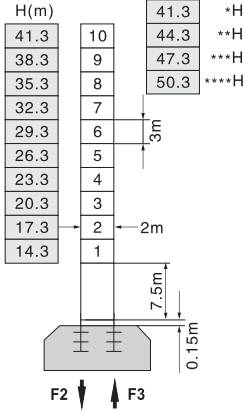


QTD5023-10t



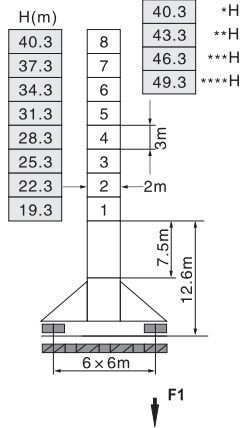
塔身截面 Mast 2m x 2m

固定式 Stationary



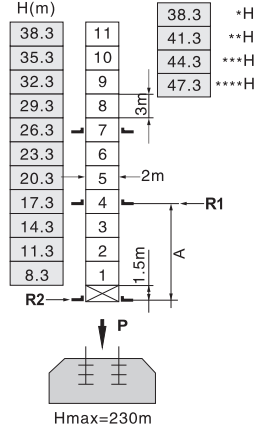
F2	● 146t	■ 175t
F3	● 98t	■ 152t
	⚖️	67t

行走式 Traveling



F1	● 92t	■ 108t
	⚖️	75t

内爬式 Inner climbing

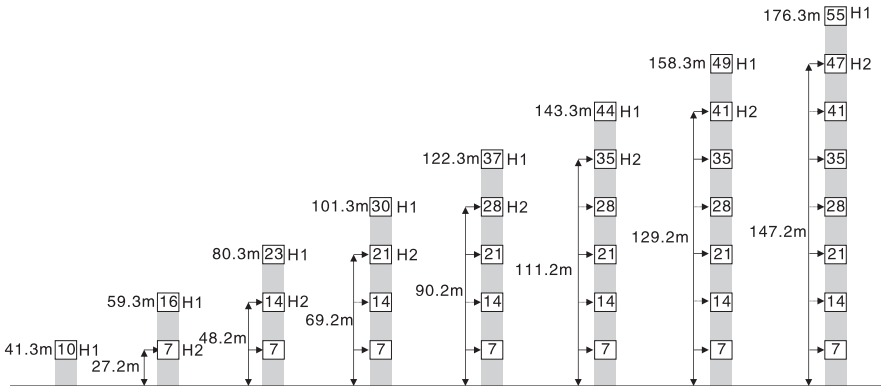


A	12m	18m
R1	25.6t	38.6t
R2	23.1t	34.2t
P	82.1t	82.1t
	⚖️	73t

H 臂根铰点下高度 Height under jib hinge shaft 臂架 Jib +50m **45m ***40m ****35-30m

- 工作状态 In service F=固定反力或轮压 Reactions
- 非工作状态 Out of service ⚖️ 自重 Total weight without load and counter weight

附着 Anchorage



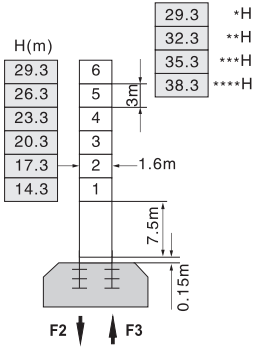
H1—臂根铰点下高度 Height under Jib Hinge Shaft

H2—塔机附着位置距地面的高度 Height of anchorage frame to the ground

① > 176.3m 请向我司咨询 Consult us

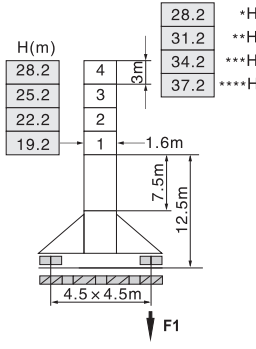
塔身截面 Mast 1.6m × 1.6m

固定式 Stationary



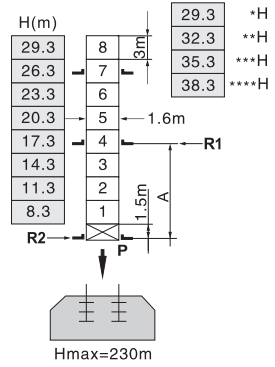
F2	● 118t	■ 135t
F3	● 78t	■ 105t
	⚖️	57t

行走式 Traveling



F1	● 76t	■ 88t
	⚖️	61t

内爬式 Inner climbing



A	7m	11m
R1	22.2t	14.2t
R2	19.7t	12.6t
P	71.5t	71.5t
	⚖️	59t

H 臂根铰点下高度 Height under jib hinge shaft 臂架 Jib *50m **45m ***40m ****35-30m

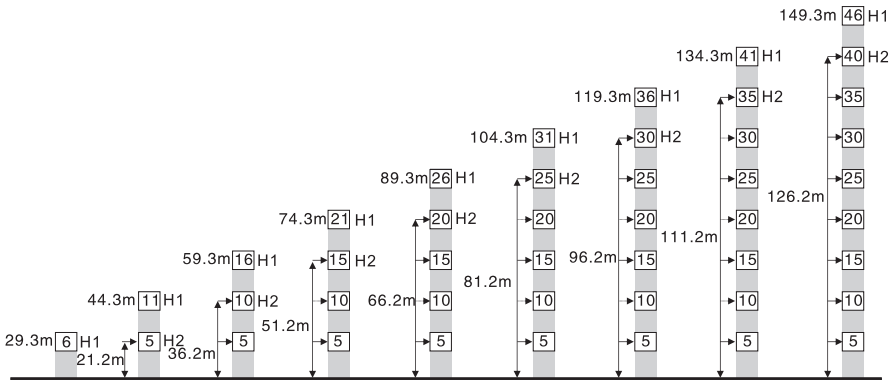
● 工作状态 In service

F=固定反力或轮压 Reactions

■ 非工作状态 Out of service

⚖️ 自重 Total weight without load and counter weight

附着 Anchorage



H1—臂根铰点下高度 Height under Jib Hinge Shaft

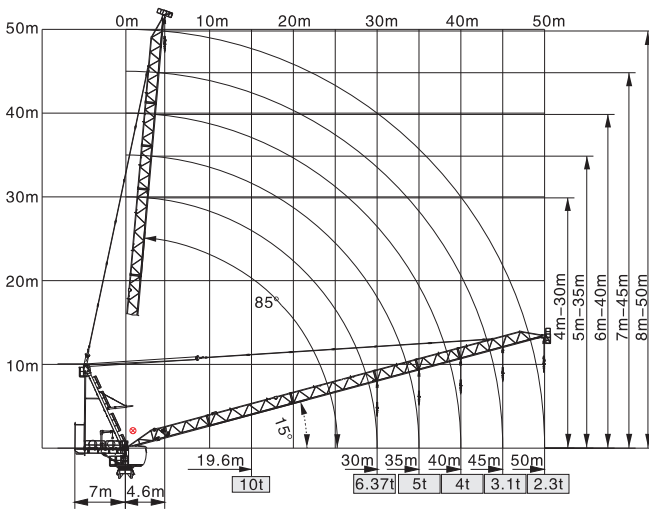
H2—塔机附着位置距地面的高度 Height of anchorage frame to the ground

① > 149.3m 请向我司咨询 Consult us

载荷特性表 Load Diagrams




起重臂 Jib (m)	倍率 Fall	起重幅度 Range (m)	4.6~19.6	20	25	30	35	40	45	50
50	IV	起重重量 Load (t)	10	9.85	7.27	5.54	4.32	3.39	2.67	2.1
	II									
45	IV	起重重量 Load (t)	10	7.5	5.78	4.55	3.63	2.9	2.3	1.8
	II									
40	IV	起重重量 Load (t)	10	7.69	5.97	4.74	3.8	3.1	2.5	2.0
	II									
35	IV	起重重量 Load (t)	10	7.89	6.17	4.95	4.1	3.4	2.8	2.3
	II									
30	IV	起重重量 Load (t)	10	8.08	6.37	5.1	4.3	3.6	3.0	2.5
	II									

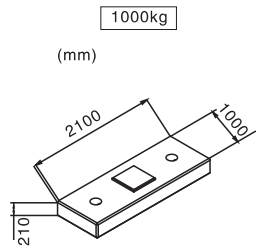
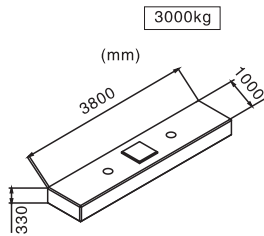
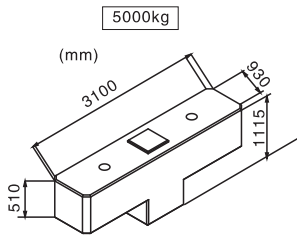
载荷特性 Load Diagrams










⊗ 臂根铰点 Jib hinge shaft

配重配置表 Counter Weight

		5000kg	3000kg	1000kg	 kg
50m	7m	1	5	2	22000
45m	7m	1	5	1	21000
40m	7m	1	5	-	20000
35m	7m	1	4	2	19000
30m	7m	1	4	1	18000



机构特性 Mechanisms

机构名称 Name	机构型号 Model						功率 Power
		m/min	t	m/min	t		
起升 Hoisting 	60LVF25	0-45	5	0-22.5	10	600m 变频控制 Inverter Control	45Kw
		0-90	2.5	0-45	5		
拉臂 Luffing 	40DVF35	min		≤3.0		变频控制 Inverter Control	30Kw
回转 Slewing 	RCV95	r/min		0-0.7			2×4.5Kw
	RVF95	r/min		0-0.7		变频控制 Inverter Control	2×4.5Kw
行走 Traveling 	14TVF	m/min		0-25		变频控制 Inverter Control	2×5.2Kw
电网/Power Supply				380V/50Hz 440V/60Hz (±5%)			
供电容量/Necessary Power				105KVA/118KVA (traveling)			

※本技术参数不受法律约束，技术信息请详见相应技术说明书。

Specifications and data is not legally binding.

For any technical information, please refer to the corresponding instructions.