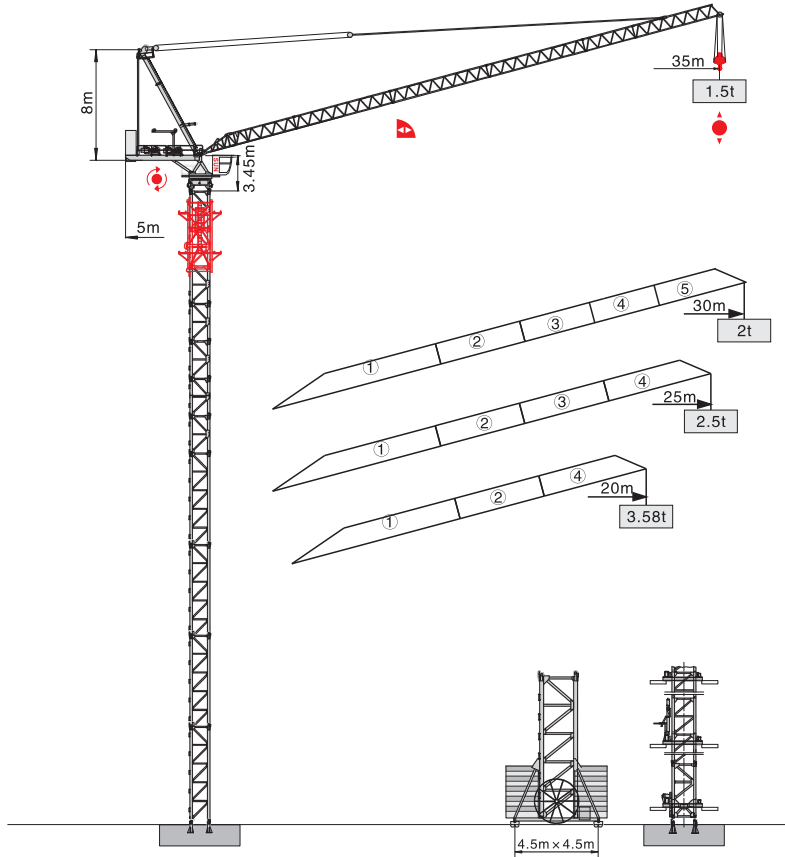




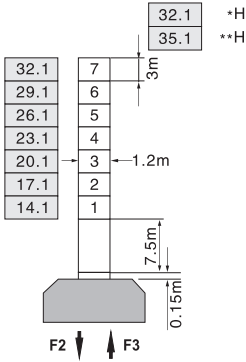
QTD3515-6t



塔身截面 Mast 1.2m × 1.2m

固定式 Stationary

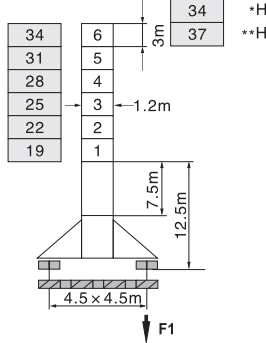
H(m)



F2	● 102t	■ 115t
F3	● 68t	■ 96t
	⚖ 30t	

行走式 Traveling

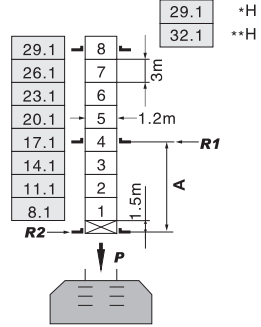
H(m)



F1	● 69t	■ 88t
	⚖ 31.5t	

内爬式 Inner climbing

H(m)

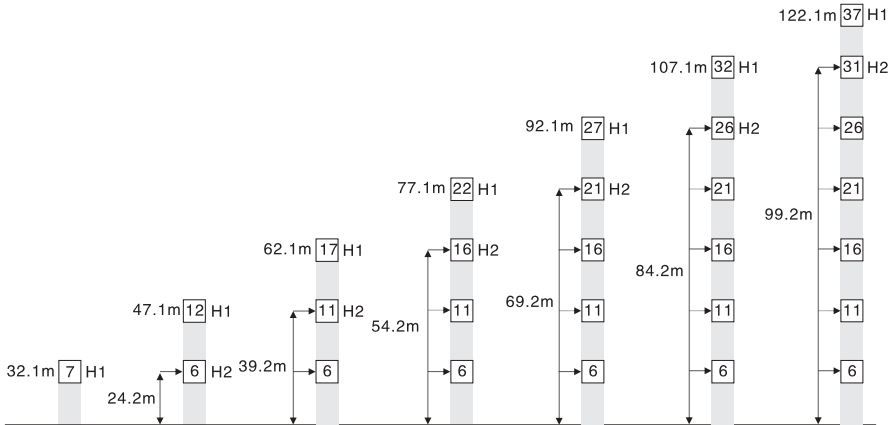


A	12m	18m
R1	32.3t	21.8t
R2	28.7t	19.2t
P	62t	62t
	⚖ 30t	

H 臂根铰点下高度 Height under jib hinge shaft 臂架 Jib +35~30m **25~20m

- 工作状态 In service F=固定反力或轮压 Reactions
- 非工作状态 Out of service ⚖ 自重 Total weight without load and counter weight

附着 Anchorage



H1—臂根铰点下高度 Height under jib hinge shaft

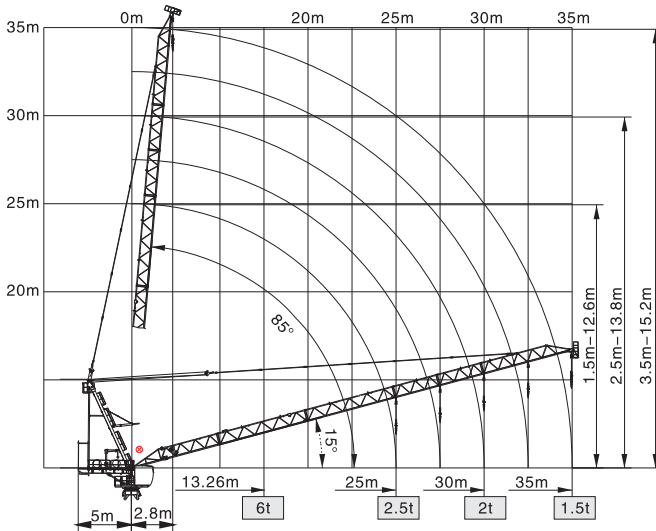
H2—塔机附着位置距地面的高度 Height of anchorage frame to the ground

① > 122.1m 请向我司咨询 Consult us

载荷特性表 Load Diagrams




起重臂 Jib (m)	倍率 Fall	起重幅度 Range (m)	2.8~13.26	15	17	20	23	25	30	35
35	IV	起重重量 Load (t)	6	5.36	4.23	3.58	2.8	2.3	1.8	1.3
	II		3						2.5	2
起重臂 Jib (m)	倍率 Fall	起重幅度 Range (m)	2.8~13.26	15	17	20	23	25	30	
30	IV	起重重量 Load (t)	6	5.36	4.23	3.58	2.8	2.3	1.8	
	II		3						2.5	2
起重臂 Fall	倍率	起重幅度 Range (m)	2.8~13.26	15	17	20	23	25		
25	IV	起重重量 Load (t)	6	5.36	4.23	3.58	2.8	2.3		
	II		3						2.5	
起重臂 Jib (m)	倍率 Fall	起重幅度 Range (m)	2.8~13.26	15	17	20				
20	IV	起重重量 Load (t)	6	5.36	4.23	3.58				
	II		3							

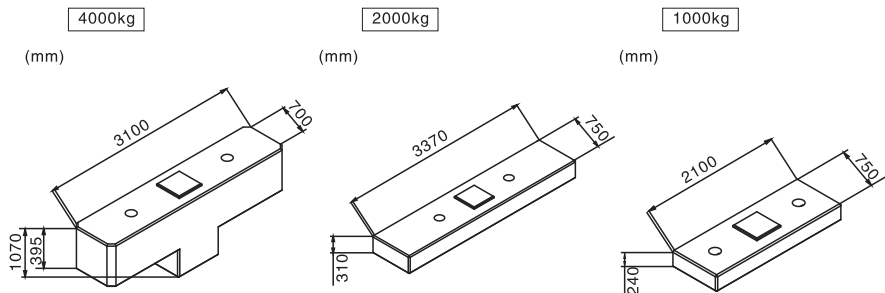
载荷特性 Load Diagrams










⊗ 臂根铰点 Jib hinge shaft

配重配置表 Counter Weight

		4000kg	2000kg	1000kg	 kg
35m	5m	1	3	3	13000
30m	5m	1	3	2	12000
25m	5m	1	3	1	11000
20m	5m	1	3	-	10000



机构特性 Mechanisms

机构名称 Name	机构型号 Model						功率 Power
		m/min	t	m/min	t		
起升 Hoisting 	30LVF15	0-40	3	0-20	6	400m 变频控制 Inverter Control	22Kw
		0-80	1.5	0-40	3		
拉臂 Luffing 	30DVF20	min	≤ 3.0		变频控制 Inverter Control	22Kw	
回转 Slewing 	RCV95	r/min	0-0.7			4.5Kw	
	RVF95	r/min	0-0.7		变频控制 Inverter Control	4.5Kw	
行走 Traveling 	14TVF	m/min	0-25		变频控制 Inverter Control	2 × 5.2Kw	
电网/Power Supply				380V/50Hz 440V/60Hz (±5%)			
供电容量/Necessary Power				60KVA/73KVA (traveling)			

※ 本技术参数不受法律约束，技术信息请详见相应技术说明书。

Specifications and data is not legally binding.

For any technical information, please refer to the corresponding instructions.